



# WOJUNG GRAM



## Global and Korean Air Cargo Market Trends

### ■ Xeneta : strong demand for air cargo drives higher spot rates

The quicker than expected recovery to July's global IT outage meant that there was no significant ongoing disruption to rates amidst ongoing strong demand for air cargo, according to the latest market analysis from Xeneta.

Airfreight rates rose for a sixth consecutive month, with global average air cargo spot rates reaching \$2.66 per kg in July, up 20% on the same month of 2023.

Rates rose off the back of the ongoing growth in cargo demand. July's volumes were up 13% year on year, due in large part to buoyant e-commerce demand from Asia as well as to the comparatively low demand base for the corresponding month of 2023.

The slower growth in global air cargo capacity of just 2% year on year – stimulated the rise in rates and in what Xeneta calls the dynamic load factor – its measurement of capacity utilisation based on volume and weight of cargo flown alongside available capacity.

The dynamic load factor was up on last year's level by five percentage points, reaching 59% in July.

In a month on month comparison, the picture was less different, however. Global air cargo demand slowed month on month in July, with the peak summer holiday season starting in the month.

According to Xeneta, strong year-on-year growth in air cargo demand is expected to extend through this month and into September, in part due to the low base set last year.

Furthermore, disruption in the Red Sea region is expected to continue to pose risks to supply chains due to container vessels' longer sailing times and reduced schedule reliability.

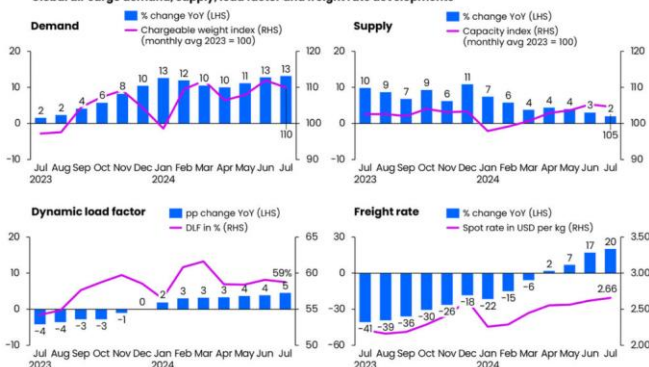
[Air Cargo News]

### ■ Korea's export air cargo status

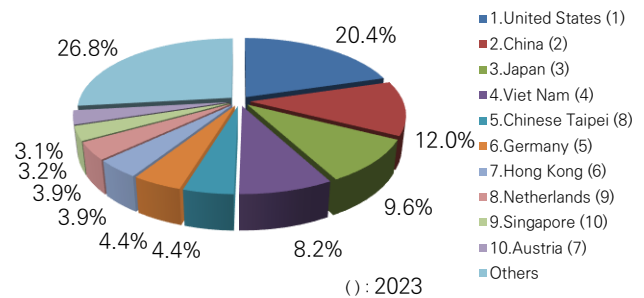
According to the CASS statistics, in JUN 2024, the total air export volume of each country in Korea was the highest to the United States, followed by China, Japan and Vietnam the rankings was unchanged compared to the 2023 rankings. The total volume of the top 10 countries accounted for 73.2% of the total. [CASS]

### Global air cargo rates continued to surge thanks to double-digit demand growth

Global air cargo demand, supply, load factor and freight rate developments



Source: Xeneta



# 1st Division – America/C&S America/Canada

- Hyunsuk Chu : [hschu@woojungair.co.kr](mailto:hschu@woojungair.co.kr) ☎ 02-3271-3520
- Changjin Song : [cjsong@woojungair.co.kr](mailto:cjsong@woojungair.co.kr) ☎ 02-3271-3528
- Youngduk Jeong : [ykjeong@woojungair.co.kr](mailto:ykjeong@woojungair.co.kr) ☎ 02-3271-3529
- Hoyoung Eom : [hyeom@woojungair.co.kr](mailto:hyeom@woojungair.co.kr) ☎ 02-3271-3527
- Heejae Choi : [hjchoi@woojungair.co.kr](mailto:hjchoi@woojungair.co.kr) ☎ 02-3271-3526
- Jinyoung Kim : [jykim@woojungair.co.kr](mailto:jykim@woojungair.co.kr) ☎ 02-3271-3521
- Yunhee Kim : [yh1kim@woojungair.co.kr](mailto:yh1kim@woojungair.co.kr) ☎ 02-3271-3522
- Sunghye Cheon : [shcheon@woojungair.co.kr](mailto:shcheon@woojungair.co.kr) ☎ 02-3271-3524
- Hyeonji Yu : [hjyu@woojungair.co.kr](mailto:hjyu@woojungair.co.kr) ☎ 02-3271-3523
- Division eMail : [usa@woojungair.co.kr](mailto:usa@woojungair.co.kr)

## ■ Capacity to America in August.2024

월요일	화요일	수요일	목요일	금요일	토요일	일요일
29	30	31	01	02	03	04
	DL196 1LDP DL170 1LDP OZ242 ORD/DFW 2~3MDP OZ286 2~3MDP OZ587 1~2MDP	DL196 1LDP DL170 1LDP OZ248 ORD/ATL 2~3MDP OZ284 2~3MDP	DL196 1LDP DL170 1LDP OZ242 ORD/DFW 2~3MDP OZ286 2~3MDP	DL196 1LDP DL158 1LDP OZ248 ORD/ATL 2~3MDP OZ284 2~3MDP OZ587 1~2MDP	DL196 1LDP DL158 1LDP OZ242 ORD/DFW 2~3MDP OZ286 2~3MDP	DL196 1LDP DL158 1LDP OZ248 ORD/ATL 2~3MDP OZ2829 2~3MDP OZ587 1~2MDP
05	06	07	08	09	10	11
DL196 1LDP DL158 1LDP OZ244 ORD/DFW 2~3MDP OZ284 2~3MDP	DL196 1LDP DL170 1LDP OZ242 ORD/DFW 2~3MDP OZ286 2~3MDP OZ587 1~2MDP	DL196 1LDP DL170 1LDP OZ248 ORD/ATL 2~3MDP OZ284 2~3MDP	DL196 1LDP DL170 1LDP OZ242 ORD/DFW 2~3MDP OZ286 2~3MDP	DL196 1LDP DL158 1LDP OZ248 ORD/ATL 2~3MDP OZ284 2~3MDP OZ587 1~2MDP	DL196 1LDP DL158 1LDP OZ242 ORD/DFW 2~3MDP OZ286 2~3MDP	DL196 1LDP DL158 1LDP OZ248 ORD/ATL 2~3MDP OZ2829 2~3MDP OZ587 1~2MDP
12	13	14	15	16	17	18
DL196 1LDP DL158 1LDP OZ244 ORD/DFW 2~3MDP OZ284 2~3MDP	DL196 1LDP DL170 1LDP OZ242 ORD/DFW 2~3MDP OZ286 2~3MDP OZ587 1~2MDP	DL196 1LDP DL170 1LDP OZ248 ORD/ATL 2~3MDP OZ284 2~3MDP	DL196 1LDP DL170 1LDP OZ242 ORD/DFW 2~3MDP OZ286 2~3MDP	DL196 1LDP DL158 1LDP OZ248 ORD/ATL 2~3MDP OZ284 2~3MDP OZ587 1~2MDP	DL196 1LDP DL158 1LDP OZ242 ORD/DFW 2~3MDP OZ286 2~3MDP	DL196 1LDP DL158 1LDP OZ248 ORD/ATL 2~3MDP OZ2829 2~3MDP OZ587 1~2MDP
19	20	21	22	23	24	25
DL196 1LDP DL158 1LDP OZ244 ORD/DFW 2~3MDP OZ284 2~3MDP	DL196 1LDP DL170 1LDP OZ242 ORD/DFW 2~3MDP OZ286 2~3MDP OZ587 1~2MDP	DL196 1LDP DL170 1LDP OZ248 ORD/ATL 2~3MDP OZ284 2~3MDP	DL196 1LDP DL170 1LDP OZ242 ORD/DFW 2~3MDP OZ286 2~3MDP	DL196 1LDP DL158 1LDP OZ248 ORD/ATL 2~3MDP OZ284 2~3MDP OZ587 1~2MDP	DL196 1LDP DL158 1LDP OZ242 ORD/DFW 2~3MDP OZ286 2~3MDP	DL196 1LDP DL158 1LDP OZ248 ORD/ATL 2~3MDP OZ2829 2~3MDP OZ587 1~2MDP
26	27	28	29	30	31	01
DL196 1LDP DL158 1LDP OZ244 ORD/DFW 2~3MDP OZ284 2~3MDP	DL196 1LDP DL170 1LDP OZ242 ORD/DFW 2~3MDP OZ286 2~3MDP OZ587 1~2MDP	DL196 1LDP DL170 1LDP OZ248 ORD/ATL 2~3MDP OZ284 2~3MDP	DL196 1LDP DL170 1LDP OZ242 ORD/DFW 2~3MDP OZ286 2~3MDP			

- ① OZ284/286 to Western area Daily, securing Max space based on contract!
- ② OZ244/242/248 to Central area & ORD Daily, DFW on D1,2,4,6, ATL on D3,5,7!!
- ③ OZ587 to Eastern area & JFK, D257
- ④ DL196 to SEA, LAX, PDX & Connections, Daily 1LDP
- ⑤ DL158 to DTW & Central/Eastern, D13567 1LDP
- ⑥ DL170 to MSP & Connection to Eastern area, D2346, 1LDP

## ■ C/S America : Mandatory to insert the following special remarks on AWB

Country	DEST	Special remarks
Chile	SCL IQQ PUQ ANF	CNEE RUT
Colombia	BOG MDE CTG BAQ CLO	CNEE NIT
Ecuador	UIO GYE	CNEE RUC
Guatemala	GUA	CNEE NIT
Peru	LIM	CNEE RUC

## ■ Special note

- ① There is still an American cargo theft. It is confirmed that it is mainly sea cargo, but air cargo may not be an exception, so please consider cargo insurance coverage, etc.
- ② AM Airlines MEX direct flights resumed on August 3rd. (ICN-MEX AM091 [1140/1040] DAILY) Two-way sections such as MTY/GDL and EZE/GRU are also possible, so please contact us.
- ③ UA : Currently, it is not possible to proceed with the return shipment by UA Air. Please refer to the action as it is due to the occurrence of customs issues.
- ④ As of August, cargo flights for QR Air DOH-EZE section were suspended. In addition, cargo connections for SCL, VCP regions will be suspended as of September. Mainduck Cargo freight rates are expected to rise for this section and in Latin America

## 2nd Division – Europe/Middle East/Africa/Central Asia

- Namsu Hwang : [nshwang@wojungair.co.kr](mailto:nshwang@wojungair.co.kr) ☎ 02-3271-3540
- Angella Lim : [angella.lim@wojungair.co.kr](mailto:angella.lim@wojungair.co.kr) ☎ 02-3271-3549
- Sojung Park : [sj.park@wojungair.co.kr](mailto:sj.park@wojungair.co.kr) ☎ 02-3271-3562
- Gyungmin Kim : [gmkim@wojungair.co.kr](mailto:gmkim@wojungair.co.kr) ☎ 02-3271-3543
- Jinyoon Jin : [jjin@wojungair.co.kr](mailto:jjin@wojungair.co.kr) ☎ 02-3271-3530
- Songi Han : [sihan@wojungair.co.kr](mailto:sihan@wojungair.co.kr) ☎ 02-3271-3525
- Hyun Kim : [hkim@wojungair.co.kr](mailto:hkim@wojungair.co.kr) ☎ 02-3271-3541
- Hyeryeon Cha : [hrcha@wojungair.co.kr](mailto:hrcha@wojungair.co.kr) ☎ 02-3271-3542
- Jaeyoung Choi : [jychoi@wojungair.co.kr](mailto:jychoi@wojungair.co.kr) ☎ 02-3271-3564
- Saebom Lee : [sb1lee@wojungair.co.kr](mailto:sb1lee@wojungair.co.kr) ☎ 070-8833 2116
- Duckju Na : [djna@wojungair.co.kr](mailto:djna@wojungair.co.kr) ☎ 070-8833-2117
- Bokyoung Kang : [bkkang@wojungair.co.kr](mailto:bkkang@wojungair.co.kr) ☎ 070-8833-0381
- Division eMail : [eu1@wojungair.co.kr](mailto:eu1@wojungair.co.kr), [eu2@wojungair.co.kr](mailto:eu2@wojungair.co.kr), [bsa@wojungair.co.kr](mailto:bsa@wojungair.co.kr)

### ■ QR (Qatar Airways)

- ① Self BUP process every 4 time a week (D3567)
- ② JNB/LOS & Africa region have a backlog. Pre-reservation required
- ③ Aircraft type 777F operate 4time a week. Need precheck about the SKID cargo
- ④ **Special offer for carton/fabric cargo for the month of August, and inquiries regarding Ton over cargo separately**
- ⑤ **New charge have been added – CANCELLATION/NO-SHOW CHARGE**
  - \*\* 100% will be charged for cancellation within 24 hours based on Cut-Off time
  - \*\* Cancellation and delay due to lack of documents also incur corresponding costs

### ■ TK (Turkish Airlines)

- ① BSA is operated on D5, D7.
- ② **TK change of BUP cargo warehouse from July.2024**
  - : New BUP cargo warehouse is WRT on 05.July
  - \*\* WRT cut off time \*\*
    - ▶ Friday TK6545 : Thursday at 3pm
    - ▶ Sunday TK6546 : Saturday at 5pm
- ③ AMS : ICN-IST-DUS-AMS truck connection
  - : Solo operation after IST arrival, Trucking without B/D takes 72 hours, Smooth connection, Submission of documents O , Extra cost X
- ④ Have a backlog region : LOS/ALG/CMN/TUN
- ⑤ To ALG, HS CODE and NIF or ICE CODE must be filled in and transmitted ( Missing may result in local customs penalty )
- ⑥ Necessary DOC and submission information of Require Inland truck connection and Truck cost is "at cost"
  - : Mawb,Hawb,Invoice,Packing List,Tax number,HS code
- ⑦ Summer schedule 24.03.31~24.10.26

Flt No.	Day	STD	STA
TK091	Daily	23:20	04:55+1
TK021	1,3,5,6	10:20	16:05
<b>TK6545</b>	<b>5</b>	<b>00:20</b>	<b>05:40</b>
<b>TK6545</b>	<b>7</b>	<b>12:45</b>	<b>18:05</b>

### ■ CV/C8 (Cargolux/Cargolux Italia)

- ① Self BUP process every 3 time a week (D136)

Day	Flt No.	Allocation
1	C87111	05:20(ICN)-17:55(MXP)-21:45(LUX)
3	C87113	09:25(ICN)-21:55(MXP)-06:15+1(LUX)
6	CV9015	03:15(ICN)-16:50(LUX)

- ② Smooth truck connecton to All region.
- ③ Running a special rate on Monday Flt (C87111)
- ④ Guidance on documentation and data transfer during E-Commerce.
  - \*\* FWB transmission: Send after writing essential phrases in the OSI column depending on the type of cargo
    - ▶ Master Single : eCommerce
    - ▶ Consolidation : Consolidation containing eCommerce
  - \*\* AWB Receipt: Required phrases according to AWB cargo type
    - Requires application after filling in the Handling Information column
      - ▶ Master Single : eCommerce
      - ▶ Consolidation : Consolidation containing eCommerce
- ⑤ Requirements by Cargo Type
  - ▶ Master Single : Accurate item name entry
  - ▶ Consolidation : Register Consolidation cargo manifest
- ⑥ Summer schedule.

**Flights from Incheon**

Airline	DEST	MON	TUE	WED	THU	FRI	SAT	SUN
Cargolux	LUX				CV7223 0700/1610		CV9015 0315/1650	CV7226 0625/1620
Cargolux Italia	MXP	C87111 0520/1755		C87113 0925/2155				C87737 0620/2030
	LUX	C87111 2025/2145		C87113 0455+1/0615+1				C87737 0445+1/0605+1
	CGO	C87111 0520/0700		C87113 0925/1110				C87737 0620/0805
	TPE							C87737 0620/0805

(All times are local times)

### ■ LH (Lufthansa Cargo AG)

- ① LH8387 / LH8385 / LH8383 DAILY (0220-0820)
- ② FRTR cancel & Exclusion on August.
  - 8/1~8/4 – EXCLUSION
  - 8/5, 8/14~8/20, 8/29 – FRTR Cancel
- ③ Not Avaiable region for Renewal trucking company
  - : STR/DUS/CGN/NUE
- ④ LH Summer schedule (LH8383/Mon)

Day	Flt No.	Route	STD	STA	A/C
Mon	LH8383	ICN/FRA	02:25	09:00	B777
	LH8035	ICN/FRA	04:50	16:05	B777
Tue	LH8387	ICN/FRA	02:25	09:00	B777
Wed	LH8385	ICN/FRA	02:25	09:00	B777
Thu	LH8387	ICN/FRA	02:25	09:00	B777
	LH8035	ICN/FRA	04:50	16:05	B777
Fri	LH8385	ICN/FRA	02:25	09:00	B777
	LH8387	ICN/FRA	00:55	07:30	B777
Sat	LH8387	ICN/FRA	00:55	07:30	B777
	LH8035	ICN/FRA	04:50	16:05	B777
Sun	LH8385	ICN/FRA	02:25	09:10	B777

※ LH/QR/TK/CV/C8 can support stable space and competitive rates through BUP, and other airlines' rates can also be negotiated, so please inquire for Europe/Middle East/Africa/Central Asia.

■ KE (Korean Air)

In accordance with the plan to mandate the use of e-AWB for departures from Korea after March 1, 2024, a fee will be charged when using a paper waybill (M/AWB). (Europe/IST/TLV/DXB) CODE: MWC 15,000/MAWB

■ TW (T Way Air) : Direct Flight to FCO

- ① ICN to FCO direct flights from August 8.  
ICN-FOC : TW405 D247 [12:35-19:15]  
FCO-MXP : RFS D246 [20:00-08:00+1] Connectable schedule
- ② ICN-ZAG : TW505 D246 [11:05-19:25]  
ZAG-VIE/BUD/WAW : RFS D135 [ 10:00-14:00+1]  
ZAG-AMS/BER/LGG/LJU/MUC/MXP/OTP/PRG/SOF : RFS D13 Connectable schedule (DDS ONLY)  
\* MIN 3TON 2PMC, PALLET ONLY

FCO & MXP SCHEDULE						
SECTOR	FLT NO	FREQUENCY	ETD	ETA	A/C TYPE	REMARK
ICN-FCO	TW405	D247	1235	1915	A332	08AUG2024~
FCO-MXP	TW RFS	D135	2000	0800+1	RFS	CONSOL TRUCK
ZAG & RFS SCHEDULE						
ICN-ZAG	TW505	D246	1105	1925	A333	16MAY2024~ (FUEL STOP at FRU 1H30M)
ZAG-BUD/VIE/WAW	TW RFS	D135	1000	1400+1	RFS	Palletized CGO ONLY (도착지 Airport or DDS 가능)
ZAG-AMS/BER/FRA/LGG/LJU/MUC/MXP/OTP/PRG/SOF	TW RFS	D13	1000	1600+1	RFS	Palletized CGO ONLY (도착지 DDS만 가능)

■ LO (LOT-Polish Airlines)

- ① Correct zip code and country code for Shipper & Consignee required for MAWB and EDI  
: Correct postcode notation : ##-### ( "-" Symbols required )
- ② All cargo(Dir&T/S) must create a Security Declaration Form
- ③ Summer Schedule change due to aircraft inspection and maintenance delay.(7/25~10/31).

LO 스케줄 조정 목록			
FLT No.	Route	Day	Status
LO2002	ICN-BUD	D4	결항
LO098	ICN-WAW	D5	결항
LO1098	ICN-WAW	D4	신규

DEST	MON	TUE	WED	THU	FRI	SAT	SUN
WAW	LO098	LO098		LO098	LO098	LO098	LO098
WRO				LO1098			
BUD	LO2002		LO2002	LO2002		LO2002	

ORIGIN	DEST	FLT NO.	ETD	ETA	FREQUENCY	A/C TYPE
ICN	WAW	LO098	11:20	17:15	1 2 4 6 7	B787-800 & B787-900
			12:30	18:25	6	
		LO1098	08:15	14:10	4	
ICN	WRO	LO2006	08:15	14:30	5	
ICN	BUD	LO2002	08:15	13:50	1 3 6	

■ YP (Air PREMIA)

- ① ICN/OSL (D4) : Not operate in August due to aircraft engine issues
- ② ICN/BCN ( D24 ) : Re-operations from August 20.

SCHEDULE

\*Effective Date : 01-AUG-2024

ROUTE	FLT NO	FREQUENCY	STD	STA	A/C
USA	ICN-LAX	YP101	DAILY	12:50	08:20
	ICN-EWR	YP131	D1 / D3 / D4 / D5 / D7	21:30	22:30
	ICN-SFO	YP111	D1 / D3 / D5 / D7	17:30	12:30
EUROPE	ICN-BCN	YP5245	D2 / D4	10:50	18:15
	ICN-OSL	YP5211	D2	10:50	18:00
ASIA	ICN-BKK	YP601	D2 / D3 / D4 / D6 / D7	17:00	21:10
	ICN-NRT	YP731	D1 / D3 / D5 / D6 / D7	08:50	11:20

- ※ BCN : 8/20부 D2, D4 재운항
- ※ OSL : 8/20부 비운항
- ※ EWR : 8/22부 D4 감편

■ KC (Air Astana)

- ① Aircraft type downgrade to A32Q (D12) on the first half of August.
- ② FSC : KRW 620 per kg on the first half of August.
- ③ Can Service : ICN-ALA-DXB/IST/TBS/TAS/GYD/DYU/FRU

Destination	Flight #	ETD	ETA	Frequency	A/C Type	Remark
ALA	Almaty	KC910	10:55	13:45	1 2	A32Q
					3 4 5 6 7	B763
NQZ	Astana	KC210	07:55	11:40	4 7	A32Q Direct(6/16~)

Destination	Flight #	ETD	ETA	Frequency	A/C Type	Remark
DXB	Dubai	KC897	09:15	12:55	DAILY	32Q
IST	Istanbul	KC911	16:50	20:55	DAILY	32Q
		KC913	04:20	08:30	1 5 6	32Q
TBS	Tbilisi	KC139	18:10	21:20	DAILY	32Q
TAS	Tashkent	KC127	11:05	12:40	DAILY	A321 & E90
		KC129	21:15	22:50	3 5 6 7	
GYD	Baku	KC115	21:30	00:10	2 4 7	A32Q & A320
			10:10	12:00	7	A320
DYU	Dushanbe	KC131	15:35	17:30	2	A32Q
FRU	Bishkek	KC109	09:55	11:45	5	A32Q
			16:35	18:25	DAILY	A320 & E90
DEL	Delhi	KC907	10:05	14:00	DAILY	A320 & A321

■ AY (FINNAIR O/Y)

- ① No cargo shipments to Russia, Belarus due to sanctions imposed due to Russia/Ukraine war.  
\*\* Including other DEST or final deston AWB are Russia, Belarus.  
\*\* Include if CNEE is Russia, Belarus under MAWB & HAWB  
※ Ship back or disposal of cargo when detecting HEL or destination customs & Penalty Occurred
- ② AMS/LHR not allow E-cigarettes & E-commerce items
- ③ In the RFS connection section, ( RIX,TLL,VNO etc... )  
Forbidden E-cigarettes items but allow E-commerce item
- ④ Forbidden E-commerce items  
A. Firearms (including toy guns, practice wood guns)  
B. RLI ( UN3090, UN3480 )  
C. Swordsman (including woodwork)  
D. Firecrackers  
E. Liquids such as Sampu: Need airport permit about MSDS

■ EY (Etihad Airways)

- ① 11times operate per week from May 01.

Flt No.	Days	From	To	Equip	Dep.*	Arr.*
EY857	Daily	ICN	AUH	B787-9	18:00L	23:00L
EY859	12.4.6.	ICN	AUH	B787-9	00:55L	05:50L

\* 화물 CUT OFF TIME (항공기 출발 4시간전)

- EY857 - 14:00LT
- EY859 - 20:55LT

- ② Do not mark Middle East (JED/RUH/DMM/AMM/KWI) CONSOL or CONSOLIDATION
- ③ Due to DXB warehouse backlog, it is currently only available to DWC

- ★ DXB airport : Only special cargo (COU,PER,VAL etc..)
- ★ DWC airport : General and special cargo

■ SV (Saudi Arabian Airlines)

- ① Suspend operations : SV867 ICN/RUH Direct from 22.June
- ② Available Offline service PAX(MNL or BKK) and FRTR(HKG)

■ ET (Ethiopian Airlines)

- ① New charge : "Aviation Security charge [AEC]"  
\*\* AEC : KRW 10 / C.WT from July.01
- ② HS CODE must be transmitted on MAWB/HAWB for all EU regions (including DME and OSL) and Cameroon (DLA/NSI) and other SHJ and DXB regions (required for ZIP CODE)

■ HY (UZBEKISTAN AIRWAYS)

- ① Increase AWC to KRW 11,000/MAWB from August 01.
- ② Change the bill writing method from August 1st  
\*\* AS ARRANGED BILL FINISHED ON AWB  
\*\* Master single only, Not allow CONSOL and CONSOLIDATION on AWB
- ③ HS CODE transmission at EDI transmission

3rd Division – South East Asia/South West Asia/Oceania/Northeast Asia

- Daegeun You : [dkyou@wojungair.co.kr](mailto:dkyou@wojungair.co.kr) ☎ 02-3271-3580
- Jinsun Kim : [js1kim@wojungair.co.kr](mailto:js1kim@wojungair.co.kr) ☎ 02-3271-3583
- Minyoung Yang : [myyang@wojungair.co.kr](mailto:myyang@wojungair.co.kr) ☎ 02-3271-3582
- Jeeay Yoon : [jayoon@wojungair.co.kr](mailto:jayoon@wojungair.co.kr) ☎ 02-3271-3584
- Kyuseek Hwang : [kshwang@wojungair.co.kr](mailto:kshwang@wojungair.co.kr) ☎ 02-3271-3581
- Minjoo Kim : [mjkim@wojungair.co.kr](mailto:mjkim@wojungair.co.kr) ☎ 02-3271-3585
- Youngsung Kim : [yskim@wojungair.co.kr](mailto:yskim@wojungair.co.kr) ☎ 02-3271-3560
- Yoomin Lee : [ym1lee@wojungair.co.kr](mailto:ym1lee@wojungair.co.kr) ☎ 02-3271-3561
- Jaegeon Yoon : [jgyoon@wojungair.co.kr](mailto:jgyoon@wojungair.co.kr) ☎ 02-3271-3547
- Haesoo Kwon : [hskwon@wojungair.co.kr](mailto:hskwon@wojungair.co.kr) ☎ 02-3271-3546
- Jiseon Kim : [jskim@wojungair.co.kr](mailto:jskim@wojungair.co.kr) ☎ 02-3271-3548
- Seulki Lee : [sk2lee@wojungair.co.kr](mailto:sk2lee@wojungair.co.kr) ☎ 02-3271-3544
- Youngwoong Choi : [ywchoi@wojungair.co.kr](mailto:ywchoi@wojungair.co.kr) ☎ 02-3271-3565
- Haein Lee : [hilee@wojungair.co.kr](mailto:hilee@wojungair.co.kr) ☎ 02-3271-3545
- Division eMail : [asia@wojungair.co.kr](mailto:asia@wojungair.co.kr), [china@wojungair.co.kr](mailto:china@wojungair.co.kr)

South East Asia & West Asia/Oceania

■ Schedule changes by carrier

Airline	Changes
MH	B737-800 New FRTR lease operation. ①KUL-KCH WW1615 D23456 [10:00-11:50] ②KUL-MAA WW209 D246 [18:00-20:15] ③KUL-RGN WW211 D136 [23:15-00:30+1] ④KUL-HAN WW220 D357 [20:10-22:20]
VJ	Change the ground handling company **Change "asiana airport" to "swissport korea" **Effective August 1, 2024
AI	Widebody type aircraft operation DEL to BLR ①AI512 DEL-BLR [2000-2310] DAily ②Need pre-confirmation of space and freight rates
JL	Information on the abolition of the Security Confirmation Sheet! **From the departure of Japanese Airlines (JL) and Ziggy Air (ZG) flights on August 15, 24 **Cargo carried in by "WorldUnitec" after conducting a security check at Incheon International Airport **Cargo carried in by "UniesSecurity" conducted a security check at Gimpo Airport If you do not fall under the above, you may need to fill out a separate document.

Northeast Asia

■ Schedule changes by carrier

Airline	Changes
KL	① CKG to operate [0020-0320] from Aug. - D37 ② YNT from Aug. - KJ233 Cancelled / KJ231 Normal Operation ③ SZX, SYX from Aug - Non operation.
CI	Air rate reduce to CAN From August. : T/S Schedule, Daily operation TT 2~3 days air Macau (NX) Additional Attachment Guide
NX	Recently, the emphasis has been placed on strengthening aircraft security and safety, especially to prevent Hidden DG and Undeclared DG from being transported, please make sure to fill out the 3 documents attached below for all cargoes shipped to NX  ※ When proceeding, each file will be provided separately.  1. CS-553-0 Cargo Acceptance Check List 2. CS-554-0 Cargo Declaration 3. CSD (Consignment Security Declaration Form).  Please fill it out and attach a copy of 3 copies of this document and register it when you receive AWB.

## Others

### ■ Fuel & Other Surcharges by Carrier

- ① **KE/OZ etc** : Long Haul : KRW 640/Kg, Medium haul : KRW 600/kg, Short haul : KRW 570/kg From August 16.
- ② **LH** : FSC KRW 1,410/Kg From August 19.
- ③ **CV/ C8** : FSC KRW1,310/KG From July 29.

### ■ Other Airline & Forwarder's information

- ① **D7** : AirAsia takes delivery of new A321neo Aircraft

AirAsia Group, a low-cost carrier (LCC), recently received delivery of four new aircraft from Airbus. The newly introduced aircraft is the A321neo, a mid- and short-range Airbus model. With the introduction of the new aircraft, the total number of A321neo owned by AirAsia has increased to eight. Currently, AirAsia Malaysia (AK) and Thailand AirAsia (FD) are operating in Phuket, Krabi, and Chiang Mai. The delivery of A321neo also increased the total number of aircraft owned at the aviation group level to 221. Meanwhile, AirAsia Group is operating at a total of 130 destinations including 20 new routes as of the first half of 2024 [CargoNews]

- ② **QR** : Cargo Division plans to shift south American supply to Asia

Qatar Airways (QR) announced that it will improve its cargo network in September to improve its profitability. The airline said, "The freight market is changing much faster than the passenger market, and it is important to respond quickly." As a result, the airline plans to shift its supply to Asia and India in September. According to the airline's recent explanation, it will also suspend the operation of four B777F cargo planes bound for South America and those bound for Atlanta. According to the latest data released by WorldACD, cargo supply in South America increased by 22 percent last week, but demand only increased by 7 percent. As a result, sales in the South American cargo sector fell by 7 percent year-on-year. [CargoNews]

- ③ **AF-KL** : Air France KLM Martinair pulls cargo capacity from Latam to focus on Asia

Air France KLM Martinair Cargo (AFKLMP) is pulling freighter capacity out of the Latin American market to increase its focus on the rapidly growing market out of Asia. The carrier today announced that Martinair would launch a new Boeing 747-400 freighter service between Amsterdam Schiphol and Hong Kong via Dubai offering around 110 tonnes of capacity per flight. The service will launch on September 19, initially operating three times per week before increasing to four weekly flights at the start of the winter season on October 27. It is the first time KLM/Martinair freighters have flown to Hong Kong in almost nine years. Meanwhile, as a result of the new Hong Kong flights, some of its services in Latin America will be suspended. A glance at the current AKLMP Latin America freighter network shows flights to Guatemala City, Quito, Bogota, Sao Paulo, Buenos Aires and Santiago. An updated map only includes flights to Bogota, which will operate three times per week via Miami. The carrier group added that it "remains steadfast in its commitment to

servicing the Caribbean and Latin America through our extensive belly network". It said it offers 145 weekly belly flights to 24 destinations in the region. Explaining the decision to shift capacity to Asia, Adriaan den Heijer, executive vice president cargo at Air France KLM and managing director Martinair, said: "In the East Asian market, the e-commerce segment is growing steadily, driving increased demand for efficient and reliable airfreight solutions.

"The introduction of this new Boeing 747 freighter service is a crucial step in adding main deck capacity to our extensive belly network. This expansion not only strengthens our freighter footprint in Asia but also offers more options and greater flexibility to our customers. "By enhancing our connectivity and broadening our reach, we are better positioned to support the growth and evolving needs of our global customer base."

AFKLMP added that the flights will strengthen its freighter footprint in Asia and are a "welcome addition" to our flights from Paris CDG to Mumbai (BOM) and Beijing (PEK).

The flights to Hong Kong will depart Amsterdam on Monday (from Oct 27), Tuesday, Thursday, and Saturday. The return flights depart Hong Kong on Tuesday (from Oct 27), Wednesday, Friday, and Sunday. [AirCargoNews]

### ④ Oman logistics company Arshad acquires Dubai forwarder M&A

Oman-based logistics company Asiad Group said it has expanded its business scope by acquiring Dubai-based forwarder Skybridge Freight Solutions (SFS).

Founded in 2007, SFS provides warehouse and distribution services in addition to the forwarding business.

"This is the first overseas M&A activity in the group's core logistics sector. Through this acquisition, we plan to expand the company's presence significantly through active trade with major trading partners such as China, India and the U.S.," an Arshad Group official said.

[Cargo News]



### ■ National Holidays

Please refer to the national holidays provided by Forward.KR thru the link below. [Forwarder.KR]

<https://www.forwarder.kr/curr/holiday.php>