



# WOJUNG GRAM



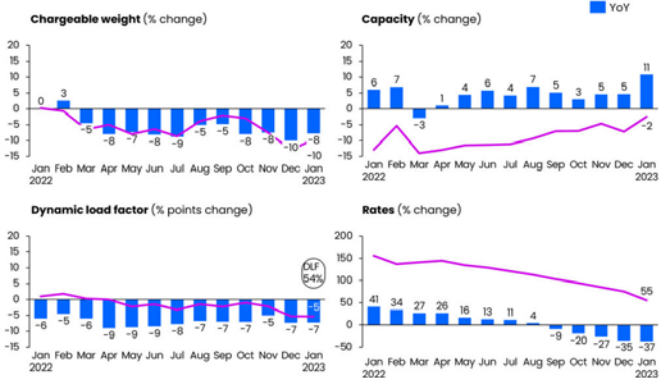
## Global and Korean Air Cargo Market Trends

### CLIVE points to continued uncertainty in the air cargo market

Industry analyst CLIVE Data Services has said that global air cargo demand continued to fall in January, down 8% year on year, partly the result of an earlier than normal Chinese New Year and partly due to global economic headwinds.

#### Year-on-year air cargo rate stabilized in January

#### Global air cargo volume, capacity, load factor and rate developments

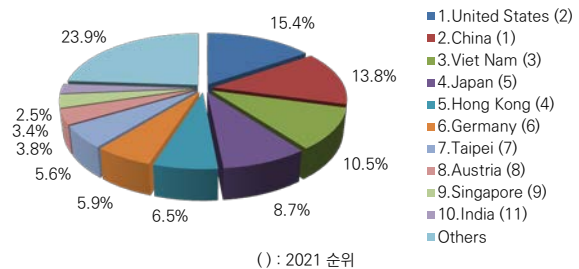


The 8% year on year fall in global airfreight demand in January also represented a fall of 10% on the same month of pre-Covid 2019. There was a 37% decline in the global airfreight spot rate to \$2.89 per kg, narrowing the gap to the pre-pandemic level to an increase of 55%. Global air cargo capacity rose a noticeable 11% year on year, but available capacity was still 2% below its 2019 level. The global average dynamic load factor, which Xeneta-owned CLIVE uses to measure cargo load factors by considering both the volume and weight perspectives of cargo flown and capacity available, reached 54%

in the first month of this year. Because of the airfreight industry's capacity increase but volume decrease, the load factor fell by 7 percentage points. Compared to 2019, it was down by 5 percentage points as the demand/supply balance started to lean towards oversupply. "The early Chinese New Year might be causing some noise in the January air cargo data with factories there closing ahead of the New Year, contributing further to a weak global market producing load factors at a level we haven't seen for some time," commented Niall van de Wouw, chief airfreight officer at Xeneta. "So, there is still a high level of uncertainty but, if rates haven't yet reached the 2019 level in value in the current climate, and with an expectation that inventory levels will need restocking at the end of Q2 and Q3, then it's unlikely we will see spot rates return to the pre-pandemic level unless this happens soon. [Air Cargo News]

### Korea's export air cargo status

According to CASS statistics, the tonnage of air exports by country in 2022 in Korea was the highest in the US, followed by China, Vietnam, and Japan, and the ranking showed a change compared to the 2021 ranking. The total weight of goods transported by the top 10 countries accounted for 76.1% of the total. [CASS]



# 1st Division – America/C&S America/Canada



- Hyunsuk Chu : [hschu@wojungair.co.kr](mailto:hschu@wojungair.co.kr) ☎ 02-3271-3520
- Minhwan Ko : [mhko@wojungair.co.kr](mailto:mhko@wojungair.co.kr) ☎ 02-3271-3526
- Youngduk Jeong : [ydjeong@wojungair.co.kr](mailto:ydjeong@wojungair.co.kr) ☎ 02-3271-3528
- Changjin Song : [cjsong@wojungair.co.kr](mailto:cjsong@wojungair.co.kr) ☎ 02-3271-3529
- Hoyoung Eom : [hyeom@wojungair.co.kr](mailto:hyeom@wojungair.co.kr) ☎ 02-3271-3527
- Woogun Kang : [wgkang@wojungair.co.kr](mailto:wgkang@wojungair.co.kr) ☎ 02-3271-3521
- Jaebum Lee : [jblee@wojungair.co.kr](mailto:jblee@wojungair.co.kr) ☎ 02-3271-3524
- Yunhee Kim : [yh1kim@wojungair.co.kr](mailto:yh1kim@wojungair.co.kr) ☎ 02-3271-3522
- Sunghee Cheon : [shcheon@wojungair.co.kr](mailto:shcheon@wojungair.co.kr) ☎ 02-3271-3523
- Division eMail : [usa@wojungair.co.kr](mailto:usa@wojungair.co.kr)

## ● Charters to America in FEB

2023 2월

연도 월

월요일	화요일	수요일	목요일	금요일	토요일	일요일
30	31	01	02	03	04	05
		DL196 1LDP DL158 1LDP	DL196 1LDP DL158 1LDP	DL196 1LDP DL158 1LDP	DL196 1LDP DL158 1LDP	DL196 1LDP DL158 1LDP
06	07	08	09	10	11	12
DL196 1LDP DL158 1LDP	DL196 1LDP DL158 1LDP	DL196 1LDP DL158 1LDP	DL196 1LDP DL158 1LDP	DL196 1LDP DL158 1LDP	DL196 1LDP DL158 1LDP	DL196 1LDP DL158 1LDP
13	14	15	16	17	18	19
DL196 1LDP DL158 1LDP	DL196 1LDP DL158 1LDP	DL196 1LDP DL158 1LDP	DL196 1LDP DL158 1LDP	DL196 1LDP DL158 1LDP	DL196 1LDP DL158 1LDP	DL196 1LDP DL158 1LDP
20	21	22	23	24	25	26
DL196 1LDP DL158 1LDP	DL196 1LDP DL158 1LDP	DL196 1LDP DL158 1LDP	DL196 1LDP DL158 1LDP	DL196 1LDP DL158 1LDP	DL196 1LDP DL158 1LDP	DL196 1LDP DL158 1LDP
27	28	01	02	03	04	05
DL196 1LDP DL158 1LDP	DL196 1LDP DL158 1LDP					

- ① DL196 to SEA, LAX, PDX, etc : Daily – 1LDP
- ② DL158 to DTW & Others of Eastern Area : Daily – 1LDP
- ③ DL to Western/Eastern Area : DAILY B/U, Please do not hesitate to contact us!

## ● C/S America : Mandatory to insert the following special remarks on AWB

Country	DEST	Special remarks
Chile	SCL IQQ PUQ ANF	CNEE RUT
Colombia	BOG MDE CTG BAQ CLO	CNEE NIT
Ecuador	UIO GYE	CNEE RUC
Guatemala	GUA	CNEE NIT
Peru	LIM	CNEE RUC

## ● Special note

- ① Brazil's largest festival from 17Feb to 20Feb begins. If you have cargo to send there, please avoid the festival period.
- ② It is said that cargo flights to MEX will be completely stopped and NLU (Felipe Angeles) will be used as a cargo-only airport.
- ③ QR and BA collaborated to secure competitive prices in the ICN/DOH/MAD to Latin America. Please do not hesitate to inquire.
- ④ It is said that the potential service interruption crisis has been somewhat resolved as the operation contract with ground handling company (Swissport ) in ORD was smoothly agreed upon.

## 2nd Division – Europe/Middle East/Africa/Central Asia



- Namsu Hwang : [nshwang@wojungair.co.kr](mailto:nshwang@wojungair.co.kr) ☎ 02-3271-3540
- Seulgi Lee : [sk1lee@wojungair.co.kr](mailto:sk1lee@wojungair.co.kr) ☎ 02-3271-3562
- Dasom Kim : [dkim@wojungair.co.kr](mailto:dkim@wojungair.co.kr) ☎ 02-3271-3543
- Soonjung Park : [sjpark@wojungair.co.kr](mailto:sjpark@wojungair.co.kr) ☎ 02-3271-3530
- Angella Lim : [angella.lim@wojungair.co.kr](mailto:angella.lim@wojungair.co.kr) ☎ 02-3271-3563
- Hanbit Jang : [hbjang@wojungair.co.kr](mailto:hbjang@wojungair.co.kr) ☎ 02-3271-3542
- Bokyung Kang : [bkkang@wojungair.co.kr](mailto:bkkang@wojungair.co.kr) ☎ 02-3271-3564
- Seunghyun Kim : [shkim@wojungair.co.kr](mailto:shkim@wojungair.co.kr) ☎ 02-3271-3525
- Saebom Lee : [sb1lee@wojungair.co.kr](mailto:sb1lee@wojungair.co.kr) ☎ 02-3271-3549
- Duckju Na : [djna@wojungair.co.kr](mailto:djna@wojungair.co.kr) ☎ 02-3271-3550
- Younggon Park : [ygpark@wojungair.co.kr](mailto:ygpark@wojungair.co.kr) ☎ 02-3271-3547
- Division eMail : [eu1@wojungair.co.kr](mailto:eu1@wojungair.co.kr), [eu2@wojungair.co.kr](mailto:eu2@wojungair.co.kr), [bsa@wojungair.co.kr](mailto:bsa@wojungair.co.kr)

### ● LH (Lufthansa Cargo)

- ① LH8387 / LH8385 Daily in progress (0200-0800)
- ② Departure time from ICN in the winter season is 1 hour faster so connection schedule can be faster!
- ③ Poss to send as BUP to BHX
- ④ Due to the introduction of the import control system (ICS2) from Mar, 6-digit HCS CODE is required.

### ● QR (Qatar Air)

- ① Own BUP is available 4/7 on D3, 5, 6, 7
  - ② Connection to the main European region is easy, WAW possible,
  - ③ Secure allotments for CDG (D1,4) FRA(D4,7) LHR(D4,7) and connection is easy
  - ④ OK to forward to EVN/GVA/ABJ/CPT/DUR/KRT/LAD/LUN/MPM WDH/ZNZ
  - ⑤ Adding freighters to RUH 4/7 on D1,2,4,7 so poss to send cargo fitting on a freighter.
- ※ We promise the lowest price to all destinations.

### ● TK (Turkish Air)

- ① Block spaces 2/7 on D5,6 are available.
- ② Freighter 5 MDP each on D5,7. Securing 2 LDP for Pax flights (TK091). ( Poss to proceed e-cigarette cargo thru X-ray)

TK winter schedule (TK6545 on D5 Cut-off change)

Flt No	Type	Day	DEP	STD	ARR	STA	Cut off
TK6545	FRTR	5	ICN	00:05	ISL	05:50	18:00 -1
TK6545	FRTR	7	ICN	05:05	ISL	10:20	20:00 -1
TK0091	PAX	Daily	ICN	00:15	IST	06:20	18:00 -1
TK0021	PAX	1236	ICN	23:10	IST	05:15+1	18:00

### ● AF/KL (Air France/KLM Air)

- ① AF267 / ETD 09:30-ETA 15:45 on D4,6
- ② KL862 / ETD 01:25 ETA 07:15 on D5

- ③ Next day connection is possible all over Europe beside LHR/BCN/MAD/FRA
- ④ Separate working process for E-COMMERCE (CSRT)

### ● European market trends in FEB

We expected a positive impact from the reopening and supply chain improvement following China's policy changes after the Lunar New Year holidays, but the impact appears to be insignificant as overall demand continues to decline due to global interest rate fluctuations and sluggish consumption. However, this is typical of the off-season in the European market in the first quarter of the previous year, and if full-fledged demand flows into the market after mid-February, a rise in the second half and a recovery in March are expected.

### ● Changes of European airlines in FEB

- ① **AY** : AY FEC and CCA charge change notice (As of 01FEB). From AY042/01FEB, FEC and CCA charge will be changed as follows.

Other charge	Rate(KRW)	Remark
FEC	3,395	HAWB당 적용
CCA fee	72,360	HAWB당 적용

### 3rd Division – South East Asia/South West Asia/Oceania/Northeast Asia



- Daegeun You : [dkyou@wojungair.co.kr](mailto:dkyou@wojungair.co.kr) ☎ 02-3271-3580
- Jinsun Kim : [js1kim@wojungair.co.kr](mailto:js1kim@wojungair.co.kr) ☎ 02-3271-3583
- Minyoung Yang : [myyang@wojungair.co.kr](mailto:myyang@wojungair.co.kr) ☎ 02-3271-3582
- Jeeay Yoon : [jayoon@wojungair.co.kr](mailto:jayoon@wojungair.co.kr) ☎ 02-3271-3584
- Kyuseek Hwang : [kshwang@wojungair.co.kr](mailto:kshwang@wojungair.co.kr) ☎ 02-3271-3546
- Youngsung Kim : [yskim@wojungair.co.kr](mailto:yskim@wojungair.co.kr) ☎ 02-3271-3560
- Hyun Kim : [hkim@wojungair.co.kr](mailto:hkim@wojungair.co.kr) ☎ 02-3271-3581
- Yoomin Lee : [ym1lee@wojungair.co.kr](mailto:ym1lee@wojungair.co.kr) ☎ 02-3271-3585
- Jiseon Kim : [jskim@wojungair.co.kr](mailto:jskim@wojungair.co.kr) ☎ 02-3271-3548
- Youngwoong Choi : [ywchoi@wojungair.co.kr](mailto:ywchoi@wojungair.co.kr) ☎ 02-3271-3565
- Seulki Lee : [sk2lee@wojungair.co.kr](mailto:sk2lee@wojungair.co.kr) ☎ 02-3271-3544
- Haein Lee : [hilee@wojungair.co.kr](mailto:hilee@wojungair.co.kr) ☎ 02-3271-3565
- Division eMail : [asia@wojungair.co.kr](mailto:asia@wojungair.co.kr), [china@wojungair.co.kr](mailto:china@wojungair.co.kr)

#### Northeast Asia

##### ● Schedule changes by carrier

Carrier	Details
OZ	<ul style="list-style-type: none"> <li>✓ New operation to FUK, Daily, Wide body A/C</li> <li>✓ Increasing frequency to CAN 3/7 → 4/7, Cargo A/C operation (the schedule is flexible weekly, so reconfirmation is required.)</li> <li>✓ Resuming ELI,ELM cargo to TSN.</li> </ul>
CK	<ul style="list-style-type: none"> <li>✓ General carton box cargo can be carried out as per deregulation.</li> </ul>
KE	<ul style="list-style-type: none"> <li>✓ New operation to NKG 1/7 wide body A/C</li> </ul>
CI,BR	<ul style="list-style-type: none"> <li>✓ Reduced rates for TPE, please do not hesitate to contact us.</li> </ul>

##### ● Regional situation in Northeast Asia

- ① CHINA: Due to the holiday in Jan, cargo volume to China & Hong Kong decreased overall. After the holidays, the volume is expected to increase compared to Jan, and no problem with schedules and spaces in Feb. Console work is also in progress, Please inquire separately for ton-over cargo and heavy cargo.
- ② JAPAN : There are no special issues related to space and rates, and it is always possible to send cargo, so please do not hesitate to contact us.
- ③ TAIWAN : From the beginning of the Lunar New Year holiday, there is a trend of decreasing cargo volume related to bundles, and the freight rate is also showing a decrease. Daily morning and evening flights are in operation, and morning flights are provided at a reduced price, so please do not hesitate to contact us.

#### South East Asia & West Asia/Oceania

##### ● Schedule changes by carrier

Carrier	Details
D7	<ul style="list-style-type: none"> <li>Adding flight to KUL</li> <li>✓ D7505 0745-1335 A330 Daily</li> <li>✓ D7509 2350-0540 +1 A330 on D1,3,5</li> </ul>
QV	<ul style="list-style-type: none"> <li>How to write Master Airwaybill to VTE</li> <li>✓ Handling information : "Not restricted"</li> <li>✓ Not allowed to insert FSC on MAWB</li> <li>✓ Mandatory to insert SIZE on AWB</li> <li>✓ Limitation : Max 70KG per PC , Max Dim. 70X70X70 cm</li> </ul>
TG	<ul style="list-style-type: none"> <li>Connection schedule to Southwest Asia in Feb</li> <li>✓ BKK – KHI TG341 1850-2225 on D2,4,5,6,7</li> <li>✓ BKK – LHE TG345 1925-2240 on D2,4,5,6,7</li> <li>✓ BKK – ISB TG349 1845-2220 on D1,3,5,6</li> </ul>
MH	<ul style="list-style-type: none"> <li>MH schedule to CGK / RGN in FEB</li> <li>KUL-CGK</li> <li>✓ MH711 DAILY 0900-1010</li> <li>✓ MH721 1340-1445 (A332) on D1,5,7 / 1340-1445 (B738) on D2,3,4,6</li> <li>✓ MH723 1625-1730 Daily</li> <li>KUL-RGN</li> <li>✓ MH740 0910-1010 (B738) on D1,2,4,5,7/ 0910-1010 (A332) on D3,6</li> <li>** As of Feb, W/body is operated between KUL/CGK and KUL/RGN, and the schedule is flexible weekly, so reconfirmation is required.</li> </ul>
VN	<ul style="list-style-type: none"> <li>Notes for VN T/S</li> <li>In case of T/S cargo, please refer to the following for customs working process</li> <li>✓ Mandatory to insert HS CODE on AWB &amp; FWB</li> <li>✓ When submitting AWB, please attach CSD (Security Memorandum).</li> </ul>

## Others

### ● Fuel & Other Surcharges by Carrier

- **KE/OZ etc** : FSC to be increased from 16Feb'23 [ long haul : KRW 910/Kg, medium range : KRW 850/kg, short haul : KRW 810/kg ]
- **7L** : Silkway imposes a reduced FSC to KRW 640/kg effective from 06Jan'23.
- **AF** : Air France imposes a reduced FSC to KRW 1,300/kg effective from 16Jan'23.
- **LH** : Lufthansa Cargo imposes a reduced ASC to KRW 1,700/kg effective from 02Jan'23.

### ● Other Airline & Forwarder's information

- **EY** : Etihad Airways (EY)'s cargo division announced that it would increase its cargo routes between Abu Dhabi (AUH) and Shanghai (PVG) from 7 to 8 flights per week from February 2. The flight description for this route is B777F. In addition, from February 2, the airline will increase the number of wide-body passenger flights to Abu Dhabi and China routes to five per week. As a result, the cargo supply capacity for the Shanghai route will increase to 850 tons per week. [Cargo News]



- **OZ** : Asiana Airlines is accelerating activities for carbon neutrality through the supply of sustainable jet fuel. This month, the airline signed a memorandum of understanding with global energy company Shell to expand the use of

sustainable aviation fuel (SAF). Under this MOU, Asiana Airlines will preferentially receive sustainable jet fuel through the Shell network in Asia Pacific and the Middle East for five years from 2026. Sustainable jet fuel is jet fuel produced from sustainable raw materials rather than conventional fossil fuels. It is known to reduce carbon emissions by up to 80% compared to fossil fuels. Sustainable aviation fuel has increased in importance due to the occurrence of carbon reduction obligations by country in accordance with the United Nations Climate Change Convention, and securing the SAF supply chain has become essential in the aviation industry according to the mandatory use of SAF in Europe. Starting with the EU (European Union), where sustainable jet fuel will be mandatory from 2025, several major countries will also make the use of sustainable jet fuel sequentially mandatory. As a national airline that operates a global network, it is meaningful that it preemptively secured the volume by signing this business agreement. An official from the airline said, "Carbon reduction is something that airlines must do as a global member.". [Cargo News]

- **KLM** : KLM Airlines will strengthen its Incheon route to seven flights a week from March 27 to September 10. First of all, from February 2nd, the Incheon-Amsterdam route will be increased from 4 to 6 flights per week. From March 27th to September 10th, it will be additionally increased to 7 times a week, the level before the pandemic. [Cargo News]

### ● National Holidays

Please refer to the national holidays provided by Forward.KR thru the link below. [Forwarder.KR]

<https://www.forwarder.kr/curr/holiday.php>