

우정 gram

Woojung Air Consolidation Inc. 5F 43 Dowha-Gil, Mapo-Gu, Seoul, Korea FAX : +82-2-3275-1327

PANORAMIC View in DIGITAL Air Cargo

항공화물플랫폼이 디지털솔루션을 만나다.

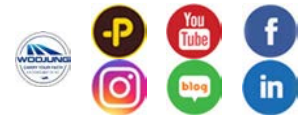
아이노마드의 '고객을 위한 솔루션'은 고객까지 창출을 위한 지속적인 혁신과 도전의 산물로
디지털솔루션을 통해 항공물류서비스 분야에서 고객의 삶을 더욱 풍요롭게 합니다.

Air cargo + Digital Solution = iNOMAD

Highlight :

- WOO runs the newly developed iNOMAD digital air cargo platform system to provide better service to customers from January 1, 2021. And the customer service site is scheduled to open from April 1, 2021.

WOO associative channels



GROWING TOGETHER 2021 – iNOMAD (digital air cargo all-in-one service)

We have expanded charter flights and HBA (Hard Block Agreement) operation through strategic contracts with leading domestic and international airlines to operate our own equipment facility through the construction of the Incheon Airport Logistics Center and provide stable cargo space and prices for aircraft. Based on our unique strengths and the composition of talented individuals with excellent expertise, we have succeeded in realizing visibility and intuitive information provision of air logistics services at all stages by adding cloud-based information and communication technology. Developed after more than 20 years of effort, iNOMAD is a digital all-in-one service platform for air freight, enabling information exchange between Korean air freight service providers and consumers through API, and developed a system that enables the most efficient and allows us to do business easily. The first step in air freight business, rate quotations and comparisons, and schedules of various airlines can be checked at a glance, and real-time confirmation of reservations and confirmed flight schedule information are provided. It is possible to check information on each stage of AWB issuance after reservation, and to check the movement of

cargo in the Incheon Airport Logistics Center at a glance, and information on whether cargo is brought in and weight and size is also provided in real time. You can check whether there is any damage or abnormality in the cargo packaging through videos and photos of the cargo handling status at each stage from the time of receipt of the cargo in the distribution center to the time of final processing. By recognizing cargo through scanners and updating information processing through tablet PCs, customers can also check the processing status of your valuable cargo in the distribution center in real time. This system is a software developed by us, and it is simultaneously applying for trademark rights and patents.

We ask for your support and interest so that Korea's first digital air freight logistics platform can grow well.

Thank you
Andrew Yim

1st Division – America/C&S America/Canada/China/Taiwan/Hongkong/Japan



- Hyunsuk Chu : hschu@woojungair.co.kr ☎ +82-2-3271-3520
- Jiwan Park : jhpark@woojungair.co.kr ☎ +82-2-3271-3528
- Minhwan Ko : mhko@woojungair.co.kr ☎ +82-2-3271-3526
- Hyoungtak Lim : htlim@woojungair.co.kr ☎ +82-2-3271-3524
- Hyesu Kwon : hskwon@woojungair.co.kr ☎ +82-2-3271-3529
- Woogun Kang : wgkang@woojungair.co.kr ☎ +82-2-3271-3521
- Jiseon Kim : jskim@woojungair.co.kr ☎ +82-2-3271-3541
- Yunhee Kim : yh1kim@woojungair.co.kr ☎ +82-2-3271-3523
- Sera Park : srpark@woojungair.co.kr ☎ +82-2-3271-3525
- Seulki Lee : sk2lee@woojungair.co.kr ☎ +82-2-3271-3522
- Hansoo Go : hsgo@woojungair.co.kr ☎ +82-2-3271-3564
- Seohoon Park : sh1park@woojungair.co.kr ☎ 02-3271-3542
- Hoyoung Eom : hyeom@woojungair.co.kr ☎ 02-3271-3527
- Division eMail : usa@woojungair.co.kr, china@woojungair.co.kr

America/C&S America/Canada

● OZ (Asiana Air)

ICN-ATL route

- ✓ Freighter on D3,5,7 & Pax on D4,6 secure space !

ICN-LAX route

- ✓ Freighter & Pax on D2,4,7 secure space !!
- ✓ Providing you with a low price for passenger flight sized cargo, so please inquire.

● AY (Finn Air)

ICN-HEL-JFK secure space !!

- ✓ Please ask for the JFK arrival schedule the next day after departure.

● DL (Delta Air) schedule change

DL026 ICN-ATL

18:30/17:45 Daily except D5 from 01Jan

DL196 ICN-SEA

18:30/17:45 Daily except D5 from 01Jan

DL158 ICN-DTW

09:20/08:15 Daily except D4 from 11Jan

● AC (Air Canada) schedule change

ICN-YVR route

- ✓ AC064 16:55/10:35 on D2,4,5,7 from 4Jan
- ✓ No operation : 23, 30Jan

● UA (United Air) schedule change

- ✓ UA892 18:00/11:20 on D2,4,5,7
- ✓ UA2833 18:00/11:20 on D1,7

- ✓ UA2833 CNXL on 4,11Jan

China/Taiwan/Hongkong/Japan

● Airfreight charges fluctuate (increase) extreme

Major nationalities China / Taiwan / Japan / Hong Kong, etc. There are frequent sudden increases in airfreight charges depending on the space, so please take note and refer to the progress.

● Airline countermeasures according to corona prevention measures

KE to PEK.

- ✓ Temperature-controlled cargo (including perishables, medicines, live animals) needs to be stored in a separate location separate from general cargo and reinforced quarantine immediately after arrival. Pivot according to separate operation when booking temperature-controlled cargo (applicable period: until separate cancellation notice)

KE to TAO : COVID-19 test conducted when unloading container

- ✓ Expected delay of 2-3 days from arrival to cargo delivery/COVID-19 TEST FEE may be imposed on CNEE upon delivery
- ✓ Pallet cargo is not tested, so please proceed with pallet as much as possible.

OZ to TSN, PVG

- ✓ Total refrigerated/frozen foods to TSN/PVG is prohibited (industrial use only)

2nd Division – Europe/Middle East/Africa/Central Asia



- Namsu Hwang : nshwang@woojungair.co.kr ☎ +82-2-3271-3560
- Seulgi Lee : sk1lee@woojungair.co.kr ☎ +82-2-3271-3562
- Jihoon Yu : jhyu@woojungair.co.kr ☎ +82-2-3271-3547
- Sihoo Min : shmin@woojungair.co.kr ☎ +82-2-3271-3548
- Seunghyeon Yang : shyang@woojungair.co.kr ☎ +82-2-3271-3545
- Jaebum Lee : jblee@woojungair.co.kr ☎ +82-2-3271-3544
- Dasom Kim : dskim@woojungair.co.kr ☎ +82-2-3271-3563
- Hanbit Jang : hbjang@woojungair.co.kr ☎ +82-22-3271-3549
- Soonjung Park : sjpark@woojungair.co.kr ☎ +82-2-3271-3561
- Miyeon Lee : my1lee@woojungair.co.kr ☎ +82-2-3271-3530
- Seunghyun Kim : shkim@woojungair.co.kr ☎ +82-2-3271-3563
- Minyoung Kim : mykim@woojungair.co.kr ☎ +82-2-3271-3550
- Division eMail : eu1@woojungair.co.kr, eu2@woojungair.co.kr

♥ YOU LOVE? THE LOVE! ♥

● ETIHAD CRYSTAL CARGO (EY)

Resuming WIDE-BODY to IST effective 17Jan !

● CEBU PACIFIC (5J)

Operating regular WIDE-BODY on D1,4,6 in Jan

✓ Please inquire for shipment to DXB.

● PHILIPPINE AIRLINES (PR)

Operating regular WIDE-BODY on D1,3,6in Jan

✓ DXB / DMM / RUH /DOH

● AIRBRIDGE CARGO AIRLINES (RU)

When transporting batteries that are applied to Special Provision A88 & A99, additional permission from State of the Operator must be obtained, and the following additional documents must be submitted 10 days before onboard

✓ (Shipper Name , Manufacture Name, Battery Model and 7 Docs)

● FINNAIRCARGO (AY)

Even if the space to HEL/RIX/VNO/TLL are full, it is poss to forward with the connection space into trucking service!

〈우정항공 물류센터 화물입고 절차 안내〉

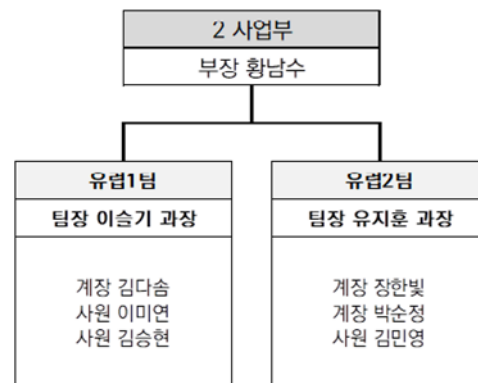
For the smooth progress and settlement of the newly introduced air cargo logistics system, we will

begin submitting the cargo receipt certificate and delivery notice (agent) when receiving cargo from this month, so we ask for your active cooperation.
※ If you do not submit the docs, you cannot bid or get off at our distribution center.

〈 2nd Division dividing into two teams 〉

For more efficient business management & response, 2nd divisions are divided into 2 teams as follow.

I hope this helps you to work.



✓ Europe 1st team / NATE-ON : wooj-div3-eu@nate.com
/ MAIL : eu1@woojungair.co.kr

✓ Europe 2nd team / NATE-ON : wooj-div3-eu1@nate.com / MAIL : eu2@woojungair.co.kr

♥ YOU LOVE? THE LOVE! ♥



- Daegeun You : dkyou@wojungair.co.kr ☎ +82-2-3271-3580
- Bomi Ha : bmha@wojungair.co.kr ☎ +82-2-3271-3546
- Jinsun Kim : js1kim@wojungair.co.kr ☎ +82-2-3271-3583
- Youngsung Kim : yskim@wojungair.co.kr ☎ +82-2-3271-3581
- Minyoung Yang : myyang@wojungair.co.kr ☎ +82-2-3271-3582
- Jeeay Yoon : jayoon@wojungair.co.kr ☎ +82-2-3271-3584
- Yoomin Lee : ymlee@wojungair.co.kr ☎ +82-2-3271-3585
- Division eMail : asia@wojungair.co.kr

JAN “빙동” THINK 동남아

● GA Garuda Indonesia Air Schedule in Jan

Existing days : Thu, Sat (2/7)

- ✓ GA879 : ICN – CGK/ 10:35 – 15:45
- ✓ DEP : 2(Sat), 7(Thu), 9(Sat), 14(Thu), 16(Sat), 21(Thu), 28(Thu), 30(Sat)

● SQ Singapore Air Schedule in Jan

Please note that the time and flight number of some flights departing from Incheon will change from 1Jan'21.

Ft No	Route	Day	ETD	ETA
SQ607	ICN-SIN	금, 일	09:00	14:45
SQ601	ICN-SIN	화, 수, 목, 토	16:35	22:20

● MH Malaysia Air Schedule in Jan

As most of Pax A/C operate with CHARTER (A330) without passengers, the schedule is flexible, so please kindly recheck when booking.

Ft No	Route	Day	ETD	ETA
MH067	ICN-KUL	3, 4, 5, 6, 7	08:45	14:25

● DAC Declared Value no CCA

- ✓ As DAC operators mainly collect and process the FWB and FHL data transmitted for the first time, it is important to transmit accurate cargo data and declared amount initially, and CCA of the reported amount is not possible. The amount CCA is not available through the airline, and according to Bangladesh customs regulations, the airline does not have the authority to do the amount CCA, and the local CNEE must handle it directly with customs. Please refer to this point and send the correct data.

● PR Philippine Airlines Schedule to MNL in Jan

Operating Wide-Body A/C on D3, 6

- ✓ PR8469 ICN-MNL 20:55/00:05+1 A330
- ✓ DEP date : 6(Wed), 9(Sat), 13(Wed), 16(Sat), 20(Wed), 23(Sat), 27(Wed), 30(Sat)

What is dry eye syndrome and how can it be prevented?

Cause & Symptom

Dry eye syndrome that occurs a lot in winter when cold wind blows and dry!

Dry eye syndrome can easily cause eye fatigue, congestion and light bleeding, and in severe cases, it can lead to decreased vision or conjunctivitis.



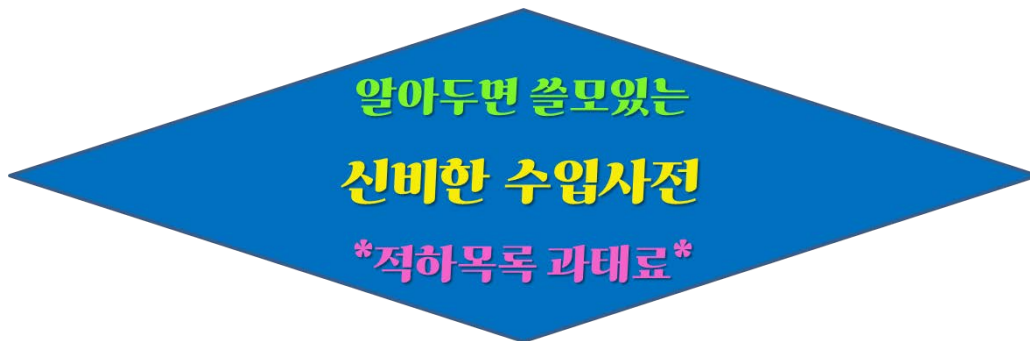
직장인 안구질환 1위, 안구건조증!

Preventive

1. Sufficient fluid intake: Replenish 8-10 cups of water a day
2. Frequent blinking of eyes: If you blink frequently, tears spread evenly on the surface of the eyeball due to irritation of the lacrimal glands!
3. Maintaining proper indoor humidity: Maintaining 40-60% indoor humidity is the most suitable
4. Monitor and smartphone brightness control: 75% or less!
5. Refrain from coffee, cigarettes and alcohol.



- Soungyup Lee : youpslee@wojungair.co.kr ☎ +82-2-3271-3540
- Hyunkyung Lee : hklee@wojungair.co.kr ☎ +82-2-3271-3541
- Jungsol Ra : jsra@wojungair.co.kr ☎ +82-2-3271-3543
- Division eMail : airin@wojungair.co.kr
- Nate on Messenger : woj-airin@nate.com
-



***EXAMPLE OF PENALTY FOR EDI ERROR**

1. Add HAWB on Manifest	2. Similar words, brand
<ul style="list-style-type: none"> ▣ Arrival : Less than 90% E-Datas of MRN ▣ Departure : Per MRN entry 	<ul style="list-style-type: none"> ▣ Marked similar words(parts, goods, sample etc) ▣ Marked Brand name (nike, Samsung etc)
3. Over revised date	4. Basic discription error
<ul style="list-style-type: none"> ▣ 15days later first warning day 60days later import/ 90days later export ▣ According to number of penalty during one year. It possible to apply additional ratio. 	<ul style="list-style-type: none"> ▣ When discription error of manifest is ensure found (without forwarder's correction notice) on Commercial invoice or import declaration. (Except tranist cargo)

★ For more information, please contact the Import Department of Woojung Air. ★

Others

- **Status of fuel & other surcharges by carrier**

- **KE/OZ** : FSC to be imposed from 16Jan'21 [long haul : KRW0 /Kg, medium range : KRW0/kg, short haul : KRW0/kg]
- **LH** : Airfreight surcharge increase from 04Jan'21 [KRW1,020/Kg -> KRW1,090/kg]

- **Other airline & forwarder's information**

- **BA** : British Airways suspends flights to Incheon due to a decrease in passenger demand from the summer season of 2021.
- **RU** : Airbridge Cargo installed a first introduced B777F freighter to Incheon route.

- **LJ** : Jin Air resumed flights from Incheon to Fukuoka once a week every Tuesday from 1Dec'20.
- **eCommerce** : Global air cargo express market, Annual Average Growth of 7.5% E-commerce is the driving force of the express market growth and is expected to grow by 7.5% annually from 2020 to 2024.

- **National holidays by country**

Please refer to the following link for national holidays provided by KOTRA.

http://www.kotra.or.kr/kh/about/KHKINY150M.do?MENU_CD=F0496&TOP_MENU_CD=F0261&LEFT_MENU_CD=F0496&PARENT_MENU_CD=F0467