

# 우정 gram

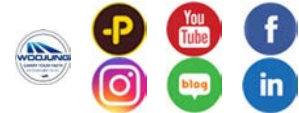
Woojung Air Consolidation Inc. 5F 43 Dowha-Gil, Mapo-Gu, Seoul, Korea FAX : +82-2-3275-1327



## Highlight :

- Due to the new Covid19 impact many airline's schedules have changed, requiring to check the booking progress in advance.
- The air cargo market in Nov, which is a different type of peak season, is difficult to predict, and it is expected that the high-price market will continue.

### WOO associative channels



## Global & Korea Air Cargo Trends

Global air cargo yield continues to be higher than last year due to supply shortages. As we are entering the peak season, rate hikes at this time are not surprising, but other air cargo market conditions this year have made it more difficult to predict the yield decisions and supply availability. [Aircargo News]

Step by step, the global climb continues...

Global air cargo volumes and capacity developments (week-over-week growth May 4-10 = Index 100, year-over-year growth in %)

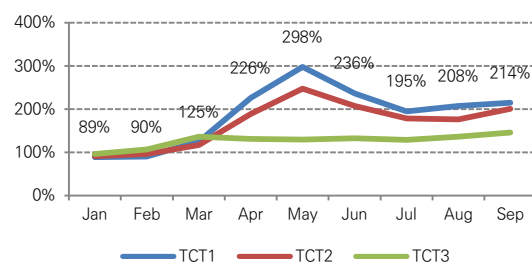


Forwarders, who were talking about a peak season, but were unable to experience a clear increase in demand, have seen a rise in air freight prices. In particular, as the supply has not increased anymore, e-commerce and high-tech product launches and demand for general retail imports are concentrated, gradually showing a typical

"peak season". In fact, the air cargo supply increased by 1% compared to the previous week, but the market reaction is that it is difficult to feel the supply expansion as it is about 20% less than the same period last year. [CargoPress]

According to CASS statistics, the rate of change in air cargo prices from Korea in 2020 compared to the previous year, except for TACT 3, rose sharply after March and peaked in May and declined from June. But risen again since Aug and keeping the price high. [CASS]

CASS the rate of air freight chares ex KR



# 1st Division – America/C&S America/Canada/China/Taiwan/Hongkong/Japan



➤ Division eMail : [usa@woojungair.co.kr](mailto:usa@woojungair.co.kr), [china@woojungair.co.kr](mailto:china@woojungair.co.kr)

- Hyunsuk Chu : [hschu@woojungair.co.kr](mailto:hschu@woojungair.co.kr) ☎ +82-2-3271-3520
- Jiwan Park : [jhpark@woojungair.co.kr](mailto:jhpark@woojungair.co.kr) ☎ +82-2-3271-3528
- Minhwan Ko : [mhko@woojungair.co.kr](mailto:mhko@woojungair.co.kr) ☎ +82-2-3271-3526
- Hyoungtak Lim : [htlim@woojungair.co.kr](mailto:htlim@woojungair.co.kr) ☎ +82-2-3271-3524
- Hyesu Kwon : [hskwon@woojungair.co.kr](mailto:hskwon@woojungair.co.kr) ☎ +82-2-3271-3529
- Woogun Kang : [wgkang@woojungair.co.kr](mailto:wgkang@woojungair.co.kr) ☎ +82-2-3271-3521
- Jiseon Kim : [jskim@woojungair.co.kr](mailto:jskim@woojungair.co.kr) ☎ +82-2-3271-3541
- Changjin Song : [cjsong@woojungair.co.kr](mailto:cjsong@woojungair.co.kr) ☎ +82-2-3271-3523
- Yunhee Kim : [yh1kim@woojungair.co.kr](mailto:yh1kim@woojungair.co.kr) ☎ +82-2-3271-3523
- Sera Park : [srpark@woojungair.co.kr](mailto:srpark@woojungair.co.kr) ☎ +82-2-3271-3525
- Hansoo Go : [hsgo@woojungair.co.kr](mailto:hsgo@woojungair.co.kr) ☎ +82-2-3271-3564
- Seohoon Park : [sh1park@woojungair.co.kr](mailto:sh1park@woojungair.co.kr) ☎ 02-3271-3542
- Hoyoung Eom : [hyeom@woojungair.co.kr](mailto:hyeom@woojungair.co.kr) ☎ 02-3271-3527

## America/C&S America/Canada

### ● OZ (Asiana Air)

ICN-MIA & JFK section

- ✓ MIA : changed DEP to Mon, Wed, Sat
- ✓ JFK : changed DEP to Tue, Wed, Fri, Sat, Sun

### ● DL (Delta Air)

ICN-SEA & ATL section

- ✓ DL196 to SEA 13:40/07:50 on Tue, Thu, Fri, Sun
- ✓ DL026 to ATL 18:30/18:59 on Mon, Tue, Wed, Thu, Sat, Sun

### ● UA (United Air)

ICN-SFO section

- ✓ UA892 18:00/11:20 on Tue, Thu, Fri, Sun
- ✓ UA2833 18:00/11:20 on Mon, Sun

### ● AM (Aeromexico Air)

ICN-MEX 구간 AM091 12:25/11:10

- ✓ Mon, Wed, Sat from 1<sup>st</sup> week of Nov
- ✓ Mon, Sat from 2<sup>nd</sup> week of Nov

### ● AC (Air Canada Air)

ICN-YVR section

- ✓ AC064 17:55/10:35 11 on Tue, Wed, Thu, Sat from 1<sup>st</sup> week of Nov
- ✓ AC064 17:55/10:35 on Tue, Wed, Sat, Sun from 2<sup>nd</sup> week of Nov

### ● NH (ANA Air)

For ORD, IAH arrival or ORD, IAH transit, MAWB C/W must be increased by 125% and B/L must be closed. Please check the final weight after delivering shipments!

## China/Taiwan/Hongkong/Japan

### ● Difficulties in supply compared to space demand due to the single's day of China

Gwanggun Festival?

- ✓ In China, it refers to the 11th of Nov, also known as solo day. 'Gwang-gun' is a Chinese word that means a single man or a person who does not have a lover. Since the "1" character is similar to a person standing alone, the culture of taking care of a solo person began to spread. 1<sup>st</sup> of Jan, where two '1s' overlap, is called the Small Gwanggunje, 11<sup>th</sup> of Jan and 1<sup>st</sup> of Nov are the Middle Gwanggunje, and 11<sup>th</sup> of Nov is the Large Gwanggunje. In 2009, as China's largest e-commerce company Alibaba Group launched a massive discount event for single people through its subsidiary Taobao Mall, the Gwanggun Festival was transformed into China's largest shopping day. Since then, most online shopping malls have participated in this discount event, and it has become the best consumption season, surpassing the largest shopping seasons in the United States such as 'Black Friday' or 'Cyber Monday'.

### ● Air Incheon (KJ) – Guide to strengthening the management of customs declaration information in Chengdu, China

- ✓ Implementation : If FWB, FHL information and actual MAWB information are inconsistent, a fine of USD 450/HAWB (MIN) is imposed immediately.
- ✓ Notes : 1) Only EDI data originally transmitted by CTU Customs is accepted (retransmitted after information change is not reflected-accurate information must be transmitted at the time of initial transmission), 2) Reuse of imported and withdrawn MAWBs is prohibited. Confusion caused by the original information and updated information upon import)
- ✓ Effective date : Effective immediately from 02Jan'20

### ● Holidays by country

Hongkong	25~26Dec : X'mas
Japan	23Nov : Labor appreciation day 29Dec~03Jan : Year-end holidays (But, due to non-national holidays, it depends on the schedule of each company)

## 2nd Division – Europe/Middle East/Africa/Central Asia



- Namsu Hwang : [nshwang@woojungair.co.kr](mailto:nshwang@woojungair.co.kr) ☎ +82-2-3271-3560
- Seulgi Lee : [sk1lee@woojungair.co.kr](mailto:sk1lee@woojungair.co.kr) ☎ +82-2-3271-3562
- Jihoon Yu : [jhyu@woojungair.co.kr](mailto:jhyu@woojungair.co.kr) ☎ +82-2-3271-3547
- Sihoo Min : [shmin@woojungair.co.kr](mailto:shmin@woojungair.co.kr) ☎ +82-2-3271-3548
- Seunghyeon Yang : [shyang@woojungair.co.kr](mailto:shyang@woojungair.co.kr) ☎ +82-2-3271-3545
- Jaebum Lee : [jblee@woojungair.co.kr](mailto:jblee@woojungair.co.kr) ☎ +82-2-3271-3544
- Dasom Kim : [dskim@woojungair.co.kr](mailto:dskim@woojungair.co.kr) ☎ +82-2-3271-3563
- Hanbit Jang : [hbjang@woojungair.co.kr](mailto:hbjang@woojungair.co.kr) ☎ +82-22-3271-3549
- Soojin Lee : [sjlee@woojungair.co.kr](mailto:sjlee@woojungair.co.kr) ☎ +82-2-3271-3561
- Miyeon Lee : [my1lee@woojungair.co.kr](mailto:my1lee@woojungair.co.kr) ☎ +82-2-3271-3530
- Seunghyun Kim : [shkim@woojungair.co.kr](mailto:shkim@woojungair.co.kr) ☎ +82-2-3271-3563

- Minyoung Kim : [mykim@woojungair.co.kr](mailto:mykim@woojungair.co.kr) ☎ +82-2-3271-3550
- Division eMail : [eu1@woojungair.co.kr](mailto:eu1@woojungair.co.kr), [eu2@woojungair.co.kr](mailto:eu2@woojungair.co.kr)

♥ YOU LOVE? THE LOVE! ♥

### ● LUFTHANSA CARGO (LH)

Decreased the airfreight surcharge to KRW 960/kg effective 26Oct

### ● AIR FRANCE/KLM ROYAL DUTCH AIRLINES (AF/KL)

Plan on increasing the CGC from KRW 3,990/kg to KRW 4,790/kg effective 16Nov

### ● FINNAIR (AY)

AY8852/ICN-HEL/13:40-16:30 Charter operation!  
5, 12, 15, 19, 22, 26, 29Nov, 3Dec : Total 8 flights

### ● ASIANA AIRLINES (OZ)

OZ541/ICN-FRA/12:00-14:30 Charter operation!  
✓ 7, 14, 21, 28Nov : Every Sat

### ● TURKISH AIRLINES (TK)

TAS connecting flights increased to daily flights!  
✓ TK370 : 1925-0155+1 / DAILY  
✓ TK6210 : 1945-0210+1 / 4

TK Operation restricted area information  
✓ RUH / JED / DMM / WAW

Passenger planes increased from 02Nov  
✓ TK091 : 00:40-06:20/ 2,3,5,6,7

### ● MIAT-MONGOLIAN AIRLINES (OM)

OM7302/ICN-ULN/16:20-19:00 3 flights in Nov!  
✓ 3, 18, 27Nov

### ● SAUDI ARABIAN AIRLINES(SV)

Available both freighter/passenger to AMS/FRA/CDG and no problem with connection!  
✓ ICN – MNL- RUH – AMS/FRA/CDG

### \*\* Tegel Airport (TXL) close, Brandenburg Airport (BER) open \*\*

Tegel Airport (TXL) will be closed from 8Nov, Brandenburg Airport (BER) opened from 31Oct, and all airlines flying to Tegel Airport (TXL) will be relocated to Brandenburg Airport (BER).



♥ YOU LOVE? THE LOVE! ♥

## 3rd Division – South East Asia/South West Asia/Oceania



- Daegeun You : [dkyou@woojungair.co.kr](mailto:dkyou@woojungair.co.kr) ☎ +82-2-3271-3580
- Bomi Ha : [bmha@woojungair.co.kr](mailto:bmha@woojungair.co.kr) ☎ +82-2-3271-3546
- Jinsun Kim : [js1kim@woojungair.co.kr](mailto:js1kim@woojungair.co.kr) ☎ +82-2-3271-3583
- Youngsung Kim : [yskim@woojungair.co.kr](mailto:yskim@woojungair.co.kr) ☎ +82-2-3271-3581
- Minyoung Yang : [myyang@woojungair.co.kr](mailto:myyang@woojungair.co.kr) ☎ +82-2-3271-3582
- Jeeay Yoon : [jayoon@woojungair.co.kr](mailto:jayoon@woojungair.co.kr) ☎ +82-2-3271-3584
- Yoomin Lee : [ymlee@woojungair.co.kr](mailto:ymlee@woojungair.co.kr) ☎ +82-2-3271-3585
- Division eMail : [asia@woojungair.co.kr](mailto:asia@woojungair.co.kr)

## NOV “빙동” THINK 동남아

### ● GA Garuda Indonesia Air Schedule in Nov

Existing days : Thu, Sat (2/7)

- ✓ GA879 : ICN – CGK/ 10:35 – 15:45
- ✓ DEP : 5(Thu), 7(Sat), 12(Thu), 14(Sat), 19(Thu), 21(Sat), 26(Thu), 28(Sat)

Additional days : Wed, Sun

- ✓ GA8794 : ICN – CGK/ 10:35 – 15:45
- ✓ DEP : 4(Wed), 8(Sun), 11(Wed), 15(Sun), 18(Wed), 22(Sun), 25(Wed), 29(Sun)

### ● MH Malaysia Air Schedule to KUL

As of 27Oct, the operation is as follows, due to the current local corona in KUL, it is difficult to proceed due to a lot of problems with the cargo process due to manpower problems and access to the warehouse. Please contact us before proceeding.

ORG	DST	FLT	DAY	ETD	ETA
ICN	KUL	MH067	2,3,4,5,6,7	08:45	14:25

### ● TW t'way Charter to SGN

Operating charter for ICN-SGN from 03Nov.

Flt No	Sector	Days	ETD	ETA	A/C
TW9121	ICN-SGN	2/4/6	19:40	23:15	B738

### ● PR Philippine Airlines Schedule to MNL in Nov

Every Wed and Thu afternoon, ICN-MNL is operated with Wide-Body (A330) as follows. (Note, the cut-off time on the 12th and 19th)

Date	Cut-Off	Flt No	ETD/ETA
08Nov	17:45	PR8469	20:55/00:05+1
11Nov	17:45	PR8469	20:55/00:05+1
12Nov	19:55	PR8469	22:55/02:05+1
18Nov	17:45	PR8469	20:55/00:05+1
19Nov	19:55	PR8469	22:55/02:05+1
25Nov	17:45	PR8469	20:55/00:05+1
26Nov	17:45	PR8469	20:55/00:05+1

- Please contact us for rate and space separately.
- ※ The above schedule is subject to change due to airline circumstances. Please contact us.

### The cold hands and feet gets worse as the temperature drops

#### Main symptoms of cold hands and feet

- My hands and feet are cold.
- My hands and feet are sore and painful.
- Feeling cold in various body parts such as knees, belly and waist.

#### Process of developing cold hands and feet

- Insufficient blood circulation in the peripheral area.
- Loss of body heat supply.
- The temperature of the hands and feet decreases.



#### Treatment for cold hands and feet

Pay attention to moisturizing so that the skin is not dry, and keep a balanced diet and life rhythm.



- Soungyup Lee : [youpslee@woojungair.co.kr](mailto:youpslee@woojungair.co.kr) ☎ +82-2-3271-3540
- Hyunkyung Lee : [hklee@woojungair.co.kr](mailto:hklee@woojungair.co.kr) ☎ +82-2-3271-3541
- Jungsol Ra : [jsra@woojungair.co.kr](mailto:jsra@woojungair.co.kr) ☎ +82-2-3271-3543
- Division eMail : [airin@woojungair.co.kr](mailto:airin@woojungair.co.kr)
- Nate on Messenger : [wooj-airin@nate.com](mailto:wooj-airin@nate.com)
- 

*“If you think about the report of cargo manifest correction, that makes you headaches. What documents are required by customs??”*



[A mysterious import dictionary that is useful to know]

[Documents to be submitted for cargo manifest correction by item]

Type	Documents	
	Common	Additional data
M B/L addition (Simple)	*Application *Explanatory statement *Correction B/L CI (PL)	-
H B/L addition		-
Item correction		Explanatory statement to be written by who make an error of product's name
Weight correction		A/WGT confirmation, Application for correction
CNEE correction (Biz)		SHIPPER's confirmation
CNEE correction (Pri)		Evidence (purchase/delivery/payment information, etc.)
Cargo classification (T⇒I)		-
B/L type (X⇒S,C)		CNEE biz license

※ I(Import), T(Transfer), S(Simpie), C(Console), X(Express cargo sample)

★Please contact our import department for more details★

# Others

- **Status of fuel & other surcharges by carrier**

- **KE/OZ** : FSC to be imposed from 16Nov'20 [ long haul : KRW0 /Kg, medium range : KRW0/kg, short haul : KRW0/kg ]

- **Other airline & forwarder's information**

- **TW** : t'way air starts operating exclusive cargo planes using passenger planes to Vietnam's Ho Chi Minh route from early November.
- **QR** : Qatar Air plans on resuming A350-900 4/7 for DOH-SFO route from 15Dec.
- **QH** : Bamboo Airways operates A321 for ICN-CXR route every day from 15Nov and for ICN-DAD route from 17Oct as well.

- **UL** : Srilankan Airlines operates A330-200 1/7 for ICN-CMB route from Nov.
- **TK** : Turkish Airlines is currently building the widest direct cargo route in the air cargo market (95 direct air cargo routes).
- **LJ** : Jin Air is the first to start forwarding cargo in the ICN-LAX section and the A/C type is cargo conversion for passenger aircraft B777-200ER

- **National holidays by country**

Please refer to the following link for national holidays provided by KOTRA.

[http://www.kotra.or.kr/kh/about/KHKINY150M.do?MENU\\_CD=F0496&TOP\\_MENU\\_CD=F0261&LEFT\\_MENU\\_CD=F0496&PARENT\\_MENU\\_CD=F0467](http://www.kotra.or.kr/kh/about/KHKINY150M.do?MENU_CD=F0496&TOP_MENU_CD=F0261&LEFT_MENU_CD=F0496&PARENT_MENU_CD=F0467)