

우정 gram

Woojung Air Consolidation Inc. 5F 43 Dowha-Gil, Mapo-Gu, Seoul, Korea FAX : +82-2-3275-1327



宇頂 WOOJUNG
The Top of the Sky

A skylark rising up to the sky high
Speaks instinct and desire within a small heart.

Wishing toward
To the wider and the higher place.

Highlight :

- Due to the new Corona19 impact many airline's schedules have changed, requiring to check the booking progress in advance.
- Untact business in the air freight market is growing rapidly (Online booking : cargo.one, webcargo, etc).

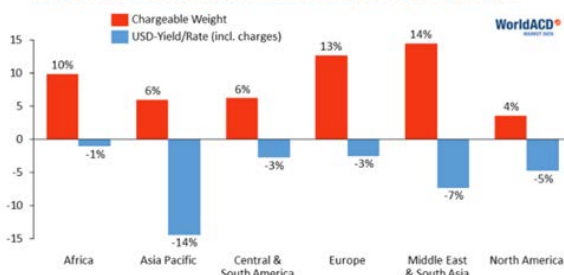
WOO associative channels



Global & Korea Air Cargo Trends

Normality in air cargo still a long way off
The demand side of the industry was slowly improving, with volumes in Jul up 8.2% compared with Jun. However, demand is still down by 18.5% year on year, there is a "huge capacity drop" on last year and the price of air cargo is 62% up compared with last year. Such a lack of capacity in the market that 'normality' still seems a long way off.

Change in volume and yield/rate from June to July 2020 - per origin region

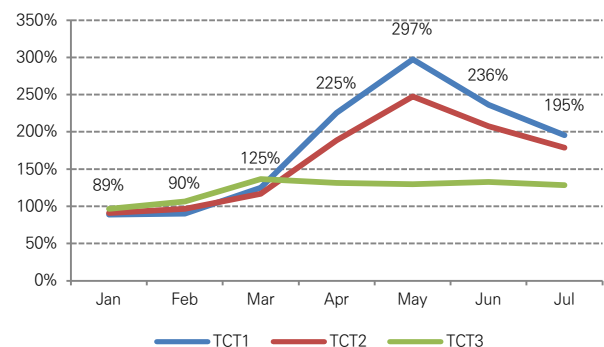


Asia Pacific was the region performing least in month-on-month percentage changes: a 6% volume growth was accompanied by a 14.4% drop in US dollar prices per kg.

Lastly, taking a first preliminary view of Aug, the first full week showed a 0.3% volume drop week-over-week, and a 2% drop in worldwide prices. [WorldACD]

The rate of change in air charges from Korea in 2020 compared to the previous year, except for TACT 3, rose sharply after Mar, peaking in May and declined from Jun, but still in Jul due to an imbalance in supply and demand. We are maintaining a higher price. [CASS]

CASS 한국발 지역별 전년대비 항공운임 변화율



1st Division – America/C&S America/Canada/China/Taiwan/Hongkong/Japan



- Hyunsuk Chu : hschu@wojungair.co.kr ☎ +82-2-3271-3520
- Jiwan Park : jhpark@wojungair.co.kr ☎ +82-2-3271-3528
- Minhwan Ko : mhko@wojungair.co.kr ☎ +82-2-3271-3526
- Hyoungtak Lim : htlim@wojungair.co.kr ☎ +82-2-3271-3524
- Hyesu Kwon : hskwon@wojungair.co.kr ☎ +82-2-3271-3529
- Woogun Kang : wgkang@wojungair.co.kr ☎ +82-2-3271-3521
- Jiseon Kim : jskim@wojungair.co.kr ☎ +82-2-3271-3541
- Changjin Song : cjsong@wojungair.co.kr ☎ +82-2-3271-3523
- Yunhee Kim : yh1kim@wojungair.co.kr ☎ +82-2-3271-3523
- Sera Park : srpark@wojungair.co.kr ☎ +82-2-3271-3525
- Hansoo Go : hsgo@wojungair.co.kr ☎ +82-2-3271-3564
- Seohoon Park : sh1park@wojungair.co.kr ☎ 02-3271-3542
- Hoyoung Eom : hyeom@wojungair.co.kr ☎ 02-3271-3527

➤ Division eMail : usa@wojungair.co.kr, china@wojungair.co.kr

America/C&S America/Canada

American Airlines Schedule Expansion

● OZ (Asiana Airlines)

Special sale for LAX & beyond LAX !!
Please fee free to contact us.

Changing the schedule to MIA & JFK

- ✓ MIA 5Y2688 23:00/02:35+1 Tue, Thu, Sat
- ✓ JFK OZ587 22:30/01:35+1 Tue, Fri, Sun
- ✓ JFK 5Y2688 22:30/07:45+1 Thu, Sat

● QF (Qantas Airways)

Operation of ICN-ORD

- ✓ QF7521 00:25/01:40 Thu
- ✓ QF7557 10:40/12:00 Sat

● DL (Delta Air)

Resume of LIM & BOG

- ✓ ATL-LIM DL3325 11:25/16:50 Mon, Thu, Sat
- ✓ ATL-BOG DL3343 15:20/19:10 Mon, Thu, Sat

● KE (Korean Air)

Resume fo BOS

- ✓ KE091 09:35/10:30 Tue, Thu, Sat

China/Taiwan/Hongkong/Japan

● KE (Korean Air) re-emphasis on FWB data transmission

Requests : Mandatory to insert SHPR TEL No. 및 CNEE TEL No.

- ✓ Among the mandatory items of FWB DATA – SHPR TEL No. & CNEE TEL No. Due to an increase in omission of the items, SZX airport is subject to penalty CNY100/MAWB effective 01Aug'20.

- ✓ Penalty imposition for omission of the required data will be expanded to all customs offices in China.

● National holidays by country

China	01Oct ~ 08Oct (Mid-autumn Festival and National Day)
Taiwan	01Oct ~ 04Oct (Mid-autumn day) 09Oct ~ 11Oct (Double Ten day)
Hongkong	01Oct (National day) 02Oct (Mid-autumn day) 26Oct (Double Ninth Festival)
Japan	19Sep ~ 22Sep (Autumnal equinox day)

2nd Division – Europe/Middle East/Africa/Central Asia



- Namsu Hwang : nshwang@woojungair.co.kr ☎ +82-2-3271-3560
 - Seulgi Lee : sk1lee@woojungair.co.kr ☎ +82-2-3271-3562
 - Jihoon Yu : jhyu@woojungair.co.kr ☎ +82-2-3271-3547
 - Sihoo Min : shmin@woojungair.co.kr ☎ +82-2-3271-3548
 - Seunghyeon Yang : shyang@woojungair.co.kr ☎ +82-2-3271-3545
 - Jaebum Lee : jblee@woojungair.co.kr ☎ +82-2-3271-3544
 - Dasom Kim : dskim@woojungair.co.kr ☎ +82-2-3271-3563
 - Hanbit Jang : hbjang@woojungair.co.kr ☎ +82-22-3271-3549
 - Soojin Lee : sjlee@woojungair.co.kr ☎ +82-2-3271-3561
 - Miyeon Lee : my1lee@woojungair.co.kr ☎ +82-2-3271-3530
 - Seunghyun Kim : shkim@woojungair.co.kr ☎ +82-2-3271-3563
- Minyoung Kim : mykim@woojungair.co.kr ☎ +82-2-3271-3550
 - Division eMail : eu1@woojungair.co.kr, eu2@woojungair.co.kr

♥ YOU LOVE? THE LOVE! ♥

● ETIHAD CARGO (EY)

When transmitting FWB for Kenya, be sure to observe the following.

- ✓ Full details of the Consignee, including:
 - ① Address (Post Office Box number)
 - ② Telephone number
 - ③ PIN number
- ✓ HS Code (6, 8 or 10 digits, but minimum is 6 digits) for each item in direct and consolidation shipments

Poss to send cargo to CPT & DUR ! (RFS via JNB)

- ✓ AUH-JNB /EY956/ Mon, Wed, Sat 3/7 – Freighter
- ✓ JNB-CPT / EY8404T/Mon, Tue, Wed, Fri – RFS
- ✓ JNB-DUR/EY8400T/Mon, Tue, Wed, Fri – RFS

● ETHIOPIAN AIRLINES (ET)

Daily connection to CAI !

- ✓ WIDE BODY 21:55-02:10+1 DAILY
- ✓ Please feel free to contact us for better connection & price

● FINNAIR (AY)

Operating 4/7 from 02Sep

- ✓ AY042 (10:20-13:35) – Wed, Fri, Sat, Sun

New other charges (CCA cost : KRW 20,000)

Reissuing AWB (KRW 105,000)

● TURKISH AIRLINES (TK)

New operation for ISL – LHR freighter and Pax flight expansion

- ✓ TK6193 : D1,4,5,/ 10:25-12:30 (PAX)

- ✓ TK6229 : D6 / 05:00-07:00 (FRTR)

● AIRBRIDGE CARGO AIRLINES (RU)

Schedule change in Sep

- ✓ RU392/10SEP ICN SVO FRA
- ✓ RU492/11SEP ICN SVO FRA
- ✓ RU692/13SEP No operation
- ✓ RU792/13SEP ICN SVO FRA

● AIR FRANCE,KLM (AFKL)

** To be changed from 01Sep **

NO SHOW FEE

- ✓ 50% of booked charges (based on All-in), more than 500KG
- ✓ LAT(Latest Acceptance Time), AF/KL DEP (00:55) 4hrs (previous day 20:55)

CANCELLATION FEE

- ✓ 25% of booked charges (based on All-in), more than 500KG, cancellation until 11:00 2days before LAT.
- ✓ E.g. In case the freight of the plane on Fri is canceled after 11:00 on Wed, if the reservation is changed after 11:00 and the weight difference decreases by more than 30%, a cancellation fee will be applied to the entire difference.

BOOKING DISCREPANCY FEE

- ✓ More than 500KG
- ✓ When the actual cargo is reduced by more than 30% in weight difference, the low show fee, such as the NO SHOW FEE, is applied to the entire difference.

♥ YOU LOVE? THE LOVE! ♥



- Daegeun You : dkyou@woojungair.co.kr ☎ +82-2-3271-3580
- Bomi Ha : bmha@woojungair.co.kr ☎ +82-2-3271-3546
- Jinsun Kim : js1kim@woojungair.co.kr ☎ +82-2-3271-3583
- Youngsung Kim : yskim@woojungair.co.kr ☎ +82-2-3271-3581
- Minyoung Yang : myyang@woojungair.co.kr ☎ +82-2-3271-3582
- Jeeay Yoon : jayoon@woojungair.co.kr ☎ +82-2-3271-3584
- Yoomin Lee : ymlee@woojungair.co.kr ☎ +82-2-3271-3585
- Division eMail : asia@woojungair.co.kr

SEP “핑동” THINK 동남아

● MH (Malaysia Air) schedule in Sep

Operating 4/7 charter pax flights for ICN/KUL (Wed, Fri, Sat, Sun)

ORG	DST	FLT	DAY	ETD	ETA	A/C
ICN	KUL	MH067	3,5,6,7	09:10	14:35	A330

Operating 6/7 connection flights for KUL/MEL (except Mon)

ORG	DST	FLT	DAY	ETD	ETA	A/C
KUL	MEL	MH129	2,3,4,5,6,7	09:20	19:15	A330

As of 03Sep, KUL-BLR routes will be newly operated, so please refer to your business.

ORG	DST	FLT	DAY	ETD	ETA	A/C
KUL	BLR	MH192	4	22:00	23:40	A330

● TG (Thai Air) schedule for ICN-BKK on 08Sep

Plan on operating Pax flight ICN/BKK only for cargo on 08Sep.

ORG	DST	FLT	DATE	ETD	ETA	A/C
ICN	BKK	TG655	08Sep	21:20	01:10	A330

● PR (Philippine Airlines) schedule ICN-MNL on 09Sep & 23Sep

DATE	FLT	A/C	ROUTE	DEP	ARR
09Sep	PR5469	A330	ICN/MNL	20:35	23:40

23Sep	PR5469	A330	ICN/MNL	20:35	23:40
-------	--------	------	---------	-------	-------

● Notice of CUT-OFF TIME change related to carry-in procedure change for export cargo

As it is scheduled to be changed to require pre-transmission of FWB and FHL prior to bringing in cargo to the airline terminal from 01Sep, the cut-off time for bringing in cargo to WOO warehouse and receiving documents has changed.

- ✓ If documents cannot be received until CUT-OFF TIME, it is required for FWB, AWB for FHL transmission, copy of license sheet, and manifest copy to be delivered in advance to airport by E-mail, FAX, or messenger.
- ✓ Please contact us for the cut-off time of WOO.

※ Please contact us for rate and space separately.
 ※ The above schedule is subject to change due to airline circumstances. Please contact us when booking.

Masks from the corona era are a must !

How to distinguish between the front and back of the mask?

1. Check the top and bottom of the mask.
2. The part containing the nose piece (metal piece) is on the top.
3. With the nose side facing up, the face of the mask with the wrinkles facing down is the front (outer side) and the side facing up is the back (inner) side.



Why do you need to differentiate between front and back?

The front is waterproof,
 The back is absorbent,
 If each function is different and used in reverse, it may have an adverse effect.

What to do when taking off the mask for a while?

Once you put it on and take it off, it's a good idea to put on a new mask.
 However, in case of reusing it, you can reduce contamination by tying to hang it on hanger whenever possible.



- Soungyup Lee : youpslee@woojungair.co.kr ☎ +82-2-3271-3540
- Hyunkyung Lee : hklee@woojungair.co.kr ☎ +82-2-3271-3541
- Jungsol Ra : jsra@woojungair.co.kr ☎ +82-2-3271-3543
- Division eMail : airin@woojungair.co.kr
- Nate on Messenger : wooj-airin@nate.com
-

“If you think about the report of cargo manifest correction, that makes you headaches. What documents are required by customs??”



[A mysterious import dictionary that is useful to know]

[Documents to be submitted for cargo manifest correction by item]

Type	Documents	
	Common	Additional data
M B/L addition (Simple)	*Application *Explanatory statement *Correction B/L CI (PL)	-
H B/L addition		-
Item correction		Explanatory statement to be written by who make an error of product's name
Weight correction		A/WGT confirmation, Application for correction
CNEE correction (Biz)		SHIPPER's confirmation
CNEE correction (Pri)		Evidence (purchase/delivery/payment information, etc.)
Cargo classification (T⇒I)		-
B/L type (X⇒S,C)		CNEE biz license

※ I(Import), T(Transfer), S(Simple), C(Console), X(Express cargo sample)

★Please contact our import department for more details★

Others

- **Status of fuel & other surcharges by carrier**

- **KE/OZ** : FSC to be imposed from 16Sep'20 [long haul : KRW0 /Kg, medium range : KRW0/kg, short haul : KRW0/kg]

- **Other airline & forwarder's information**

- **LH** : Lufthansa Cargo expands its pharmaceutical hub in Munich significantly in response to vaccine demand.



- **PR** : Philippine Airlines operates daily for the ICN-CEB, ICN-MNL and PUS-MNL routes as A321 from 01Sep and 4/7 for the ICN-CRK routes as A320 from 03Sep.

- **TK** : Turkish Airlines operates CARGY, an artificial intelligence in the cargo sector that can respond to customer needs in real time, and responds to customer requests in real time 24 hours a day.

- **GA** : Garuda Airways maintains the Incheon-Jakarta (ICN-CGK) route twice a week in Sep and the aircraft type is A330-300.

- **ET** : Ethiopian Airlines operates the ADD-ICN-NRT route four times a week in Sep and the A/C type is B787-8.

- **CI** : Taiwan China Airlines operates the ICN-TPE route twice a week in Sep.

- **National holidays by country**

Please refer to the following link for national holidays provided by KOTRA.

http://www.kotra.or.kr/kh/about/KHKINY150M.do?MENU_CD=F0496&TOP_MENU_CD=F0261&LEFT_MENU_CD=F0496&PARENT_MENU_CD=F0467