

우정 gram

Woojung Air Consolidation Inc. 5F 43 Dowha-Gil, Mapo-Gu, Seoul, Korea FAX : +82-2-3275-1327



Highlight :

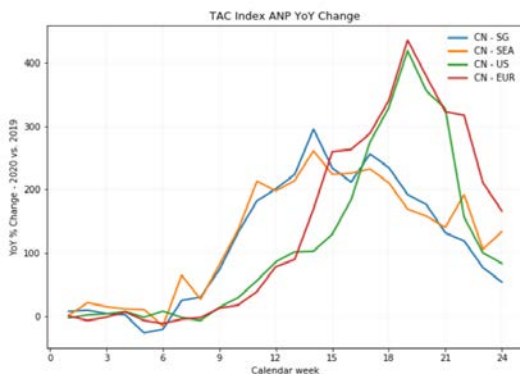
- Due to the new Corona19 impact many airline's schedules have changed, requiring to check the booking progress in advance.
- As airfare stabilizes, airlines are gradually reducing the operation of charter for cargo by using passenger planes.

WOO associative channels



Global & Korea Air Cargo Trends

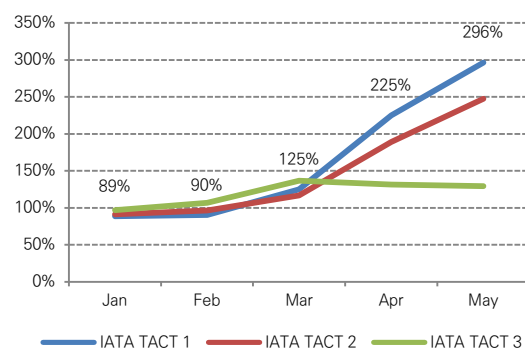
In June, airfreight rates ex Asia on the slide rapidly



In early June, it shows that airfreight rates from PVG to N/A declined by 23.9% week on week to \$5.80 /kg while from HKG to N/A there was a 9.7% drop to \$6.08 /kg. This drop in airfreight rates from Asia is analyzed because demand for personal protective equipment (PPE) has reached a stabilization period according to the "TAC Index" announced in Hong Kong. [Cargo News]

According to the CASS statistics, the rate of change in airfare from Korea compared to the previous year has risen sharply since March in other regions except TACT 3, and peaked in May, but management of receivables due to high fare has become a major issue. It has declined sharply since June and it is expected to be adjusted like TAC index.

The rate of change ex KR in airfreight price



1st Division – America/C&S America/Canada/China/Taiwan/Hongkong/Japan



- Hyunsuk Chu : hschu@wojungair.co.kr ☎ +82-2-3271-3520
- Jiwan Park : jhpark@wojungair.co.kr ☎ +82-2-3271-3528
- Minhwan Ko : mhko@wojungair.co.kr ☎ +82-2-3271-3526
- Hyoungtak Lim : htlim@wojungair.co.kr ☎ +82-2-3271-3524
- Hyesu Kwon : hskwon@wojungair.co.kr ☎ +82-2-3271-3529
- Woogun Kang : wgkang@wojungair.co.kr ☎ +82-2-3271-3521
- Jiseon Kim : jskim@wojungair.co.kr ☎ +82-2-3271-3541
- Changjin Song : cjsong@wojungair.co.kr ☎ +82-2-3271-3523
- Yunhee Kim : yh1kim@wojungair.co.kr ☎ +82-2-3271-3523
- Sera Park : srpark@wojungair.co.kr ☎ +82-2-3271-3525
- Hansoo Go : hsgo@wojungair.co.kr ☎ +82-2-3271-3564
- Seohoon Park : sh1park@wojungair.co.kr ☎ 02-3271-3542
- Hoyoung Eom : hyeom@wojungair.co.kr ☎ 02-3271-3527

➤ Division eMail : usa@wojungair.co.kr, china@wojungair.co.kr

America/C&S America/Canada

American Airlines Schedule Expansion

- **AA**
 - ✓ AA280 [17:25-16:20] to DFW operates from 11Jul on D1,3,6
- **DL**
 - ✓ DL158 [10:45-10:50] to DTW operates daily from 01Jun
 - ✓ DL026 [17:40-18:30] to ATL operates from 04Jul on D2,3,6
 - ✓ DL196 [13:40-08:00] to SEA operates from 06Jul on D1,3,5,7
- **AM**
 - ✓ AM091 [12:25-11:10] to MEX operates from 01Jul on D1,3
 - ✓ Possible to connect to GDL & MTY
- **UA**
 - ✓ UA892 [11:30-06:40] to SFO operates from 08Jul on D1,3,6
 - ✓ UA2833 [16:00-11:10] to SFO operates from 10Jul on D5,7
- **BA resuming additional routes to C&S America**
 - ✓ As it is possible to forward to MEX, EZE, GRU, BOG, HAV, MVD, PTY, SCL, SDQ, SJO, UIO, please feel free to contact us.

China/Taiwan/Hongkong/Japan

● Frequent schedule changes to China & Japan

- **Air Incheon (KJ) prohibited items to CTU**
 - ✓ Date : 01Jul'20 ~ UFN
 - ✓ Details : Temporary prohibition of importation of special cargo (specified below) and cargo at a certain temperature due to the construction of a designated device for the import and export inspection area in Chengdu (CTU) airport
 - ✓ Prohibited items : Cars, General food, Imported cold chain goods (meat, frozen/refrigerated seafood, sausage, meat products), Fruits, Fish, Wood, Grains, Seedlings, Recycled clay, Microorganisms, Human tissues, Biological products, products related blood, Carcass temperature maintenance (warm, cool, frozen)
- **Air Incheon (KJ) the change of rate structure and minimum rate to CTU**
 - ✓ Please contact with the person in charge of operation.

● Holidays in Japan

Japan	<ul style="list-style-type: none"> ✓ 7/23 ~ 7/26 ✓ 8/8 ~ 8/10 ✓ 8/12 ~ 8/16 Obong holiday
-------	--

2nd Division – Europe/Middle East/Africa/Central Asia



- Namsu Hwang : nshwang@wojungair.co.kr ☎ +82-2-3271-3560
- Seulgi Lee : sk1lee@wojungair.co.kr ☎ +82-2-3271-3562
- Jihoon Yu : jhyu@wojungair.co.kr ☎ +82-2-3271-3547
- Sihoo Min : shmin@wojungair.co.kr ☎ +82-2-3271-3548
- Seunghyeon Yang : shyang@wojungair.co.kr ☎ +82-2-3271-3545
- Jaebum Lee : jblee@wojungair.co.kr ☎ +82-2-3271-3544
- Dasom Kim : dskim@wojungair.co.kr ☎ +82-2-3271-3563
- Hanbit Jang : hbjang@wojungair.co.kr ☎ +82-22-3271-3549
- Soojin Lee : sjlee@wojungair.co.kr ☎ +82-2-3271-3561
- Miyeon Lee : my1lee@wojungair.co.kr ☎ +82-2-3271-3530
- Seunghyun Kim : shkim@wojungair.co.kr ☎ +82-2-3271-3563
- Minyoung Kim : mykim@wojungair.co.kr ☎ +82-2-3271-3550
- Division eMail : eu1@wojungair.co.kr, eu2@wojungair.co.kr

♥ YOU LOVE? THE LOVE! ♥

● TURKISH AIRLINES (TK)

- ✓ WOO-BSA starts 2/7 on D5 & D7. Special offer is possible! Please feel free to contact us!

● FINNAIR (AY)

- ✓ ICN-HEL [10:20-13:55] operates 3/7 on D3,5,7 from Jul!
- ✓ When loading cargo from 25Jun : Mandatory to describe the correct name of items on MAWB, HAWB!

● MIAT-MONGOLIAN AIRLINES (OM)

- ✓ ICN-ULN [14:20-17:00] operates on 02Jul, 7Jul, 15Jul!

● AIR FRANCE (AF)

- ✓ ICN-CDG [00:50-05:55] operates 3/7 on D1,3,6 from Jul

● AIR ASTANA (KC)

- ✓ ICN-ALA [11:25-15:15] operates 2/7 on D1,5 from Jul!

● POLISH AIRLINES (LO)

- ✓ ICN-BUD [08:50-14:35] operates 1/7 on D1 from 20Jul (direct flight)!
- ✓ ICN-WAW [07:40-13:25] operates 2/7 on D5,7 between 05Jul and 15Jul (direct flight)!
- ✓ ICN-WAW [10:55-14:25] operates 3/7 on D2,4,6 between 16Jul and 31Jul (direct flight)!

● ASIANA AIRLINES (OZ)

Resuming Pax flight schedule in Jul

- ✓ ICN-FRA OZ541/542 : D1,3,5,6,7 from 01Jul
- ✓ ICN-LHR OZ521/522 : D1,5 from 01Jul
- ✓ ICN-CDG OZ501/502 : D5 from 17Jul
- ✓ ICN-IST OZ551/552 : D5 from 24Jul

● ETIHAD CARGO (EY)

- ✓ Resuming operation from 16Jul : DUS,MUC,MAN,IST,CAI

♥ YOU LOVE? THE LOVE! ♥

3rd Division – South East Asia/South West Asia/Oceania



- Daegeun You : dkyou@wojungair.co.kr ☎ +82-2-3271-3580
- Bomi Ha : bmha@wojungair.co.kr ☎ +82-2-3271-3546
- Jinsun Kim : js1kim@wojungair.co.kr ☎ +82-2-3271-3583
- Youngsung Kim : yskim@wojungair.co.kr ☎ +82-2-3271-3581
- Minyoung Yang : myyang@wojungair.co.kr ☎ +82-2-3271-3582
- Jeeay Yoon : jayoon@wojungair.co.kr ☎ +82-2-3271-3584
- Yoomin Lee : ymlee@wojungair.co.kr ☎ +82-2-3271-3585
- Division eMail : asia@wojungair.co.kr

JUL “핑동” 핑동 THINK 동남아

● KE : Operation to RGN, CEB, PNH

- ✓ KE471 to RGN [16:15-19:30] : 5/7 on D1,2,3,4,5
- ✓ EXTRA to CEB on 03Jul,10Jul
- ✓ W/B operation to PNH on 03Jul, 05Jul, 10Jul, 17Jul, 24Jul, 31Jul

● GA : Schedule change to JKT in Jul

- As of July, the existing flight of GA879 operating 2/7 on D5,7, will be changed to 2/7 on D4,6.
- ✓ ICN-JKT / GA879 [10:35-15:45] normal operation in Jul
Date : Thru, Sat (2/7) on 2/4/9/11/16/18/23Jul

● SQ : Pax expansion to SIN / Resume to RGN via SIN

- ✓ Pax flights are increased from 3/7 to 5/7 : ICN-SIN / SQ609 [16:45-22:00] – D3,4,5,6,7
- ✓ Resuming the route of SIN-RGN from 04Jul

Flight	Day	Dep	Arr	A/C
SQ998	Sat	07:55	09:20	B773

● NZ : operates a direct flight to AKL from 05Jul

- ✓ ICN-AKL / NZ1076 [16:50-07:15+1] : Every Sun

● VJ : extending the suspension period of temporary flight to SGN

- VJ863 ICN-SGN suspension during Jul.
- ✓ Reason : continued lack of inbound demand
 - ✓ Period : 01Jul ~ 31Jul

● 5J : operates flights only for cargo

- Operates to MNL from 19Jun 1/7
- ✓ Every Fri ICN-MNL [00:20-04:05]

- ※ Please inquire separately for rate and space
- ※ The above schedule is subjected to change due to airline conditions. Please inquire when booking

Sang-Sang Corona

(False Corona)



A new word that means to suspect whether you are infected with corona19 despite daily symptoms such as fatigue or headache.

Countermeasures

1. Balanced meal
2. Drink water frequently
3. Frequent movement such as home training, stretching
4. Get a good night's sleep





- Soungyup Lee : youpslee@woojungair.co.kr ☎ +82-2-3271-3540
- Hyunkyung Lee : hklee@woojungair.co.kr ☎ +82-2-3271-3541
- Jungsol Ra : jsra@woojungair.co.kr ☎ +82-2-3271-3543
- Division eMail : airin@woojungair.co.kr
- Nate on Messenger : wooj-airin@nate.com
-

“If you think about the report of cargo manifest correction, that makes you headaches. What documents are required by customs??”



[A mysterious import dictionary that is useful to know]

[Documents to be submitted for cargo manifest correction by item]

Type	Documents	
	Common	Additional data
M B/L addition (Simple)	*Application *Explanatory statement *Correction B/L CI (PL)	-
H B/L addition		-
Item correction		Explanatory statement to be written by who make an error of product's name
Weight correction		A/WGT confirmation, Application for correction
CNEE correction (Biz)		SHIPPER's confirmation
CNEE correction (Pri)		Evidence (purchase/delivery/payment information, etc.)
Cargo classification (T⇒I)		-
B/L type (X⇒S,C)		CNEE biz license

※ I(Import), T(Transfer), S(Simple), C(Console), X(Express cargo sample)

★Please contact our import department for more details★

Others

- **Status of fuel & other surcharges by carrier**

- **KE/OZ** : FSC to be imposed from 16Jul'20 [long haul : KRW0 /Kg, medium range : KRW0/kg, short haul : KRW0/kg]
- **LH** : Plan on increasing Airfreight Surcharge to KRW 1,090/kg effective 06Jul'20

- **Other airline & forwarder's information**

- **LH** : Operates LH719 ICN-MUC 3/7 on D1,3,5 from 24Jun and special offer is available.
- **EK** : Modified 10 B777 passenger planes to meet cargo demand due to corona, Recently 10 "B777-300ER" passenger seats were removed and used as cargo storage space



- **DL** : Resumes 1/7 the route of ICN-ATL from Jul and keep the current frequency for ICN-DTW, ICN-SEA. Resumes the routes of ICN- LAX, ICN-SYD as 1/7 each
- **QH** : Plan on operating daily for the route of ICN-HAN effective 01Aug and A/C type is B787-9
- **XJ** : Plan on operating 3/7 for the route of ICN-DMK from Aug

- **National holidays by country**

Please refer to the following link for national holidays provided by KOTRA.

http://www.kotra.or.kr/kh/about/KHKINY150M.do?MENU_CD=F0496&TOP_MENU_CD=F0261&LEFT_MENU_CD=F0496&PARENT_MENU_CD=F0467